

Makes even the  
most difficult intervention

# A FAST AND SMOOTH RUN.

***Guideline***<sup>®</sup>  
*V3 catheter*

GUIDE EXTENSION CATHETER  
WITH HALF-PIPE TECHNOLOGY

# THAT'S A REAL GAME CHANGER.

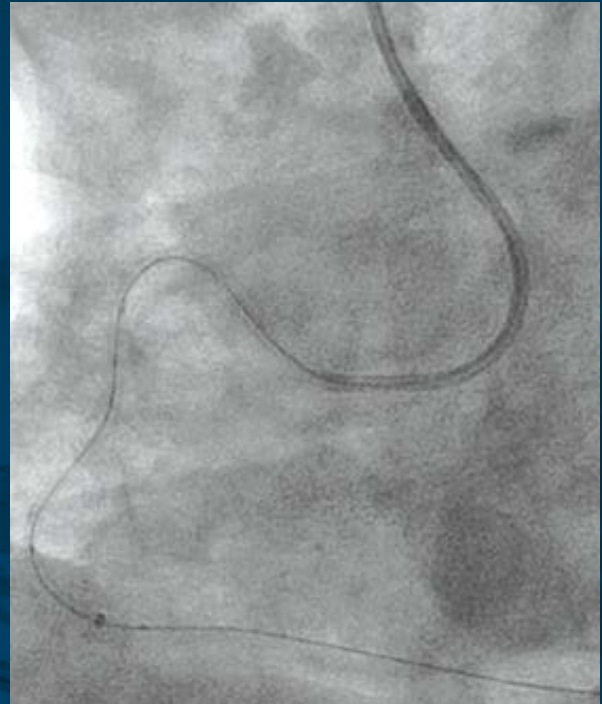
*"The GuideLiner makes some impossible cases possible and difficult cases easier."\**

– Interventional Cardiologist

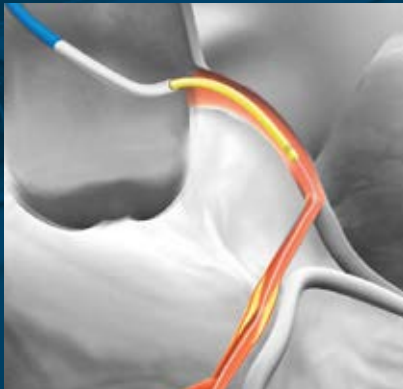
*"The GuideLiner has made complex procedures much easier, allowing me to succeed more quickly with less struggle."\**

– Interventional Cardiologist

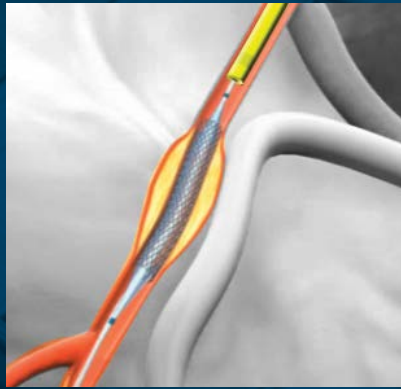
\*These statements reflect the personal experience and opinion of the physician.



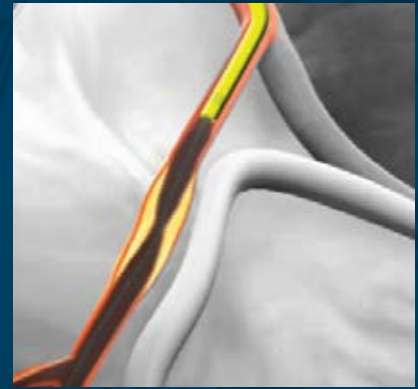
## MULTIPLE CLINICAL USES



Deep-seating for coaxial alignment & backup support



Deep-seating for distal device delivery



Deep-seating for selective delivery of contrast

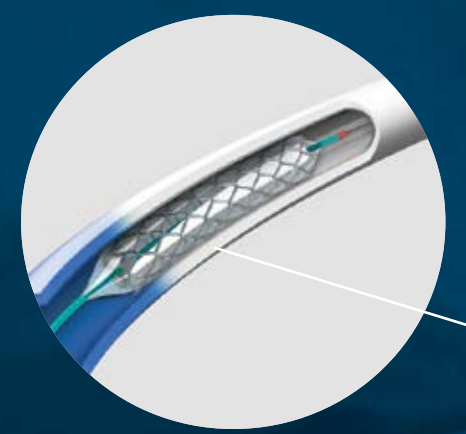
# END-TO-END INNOVATION THAT HELPS SIMPLIFY CHALLENGING INTERVENTIONS.

V3 COLLAR TRANSITION

V3 HALF-PIPE CHANNEL

## V3 HALF-PIPE TECHNOLOGY

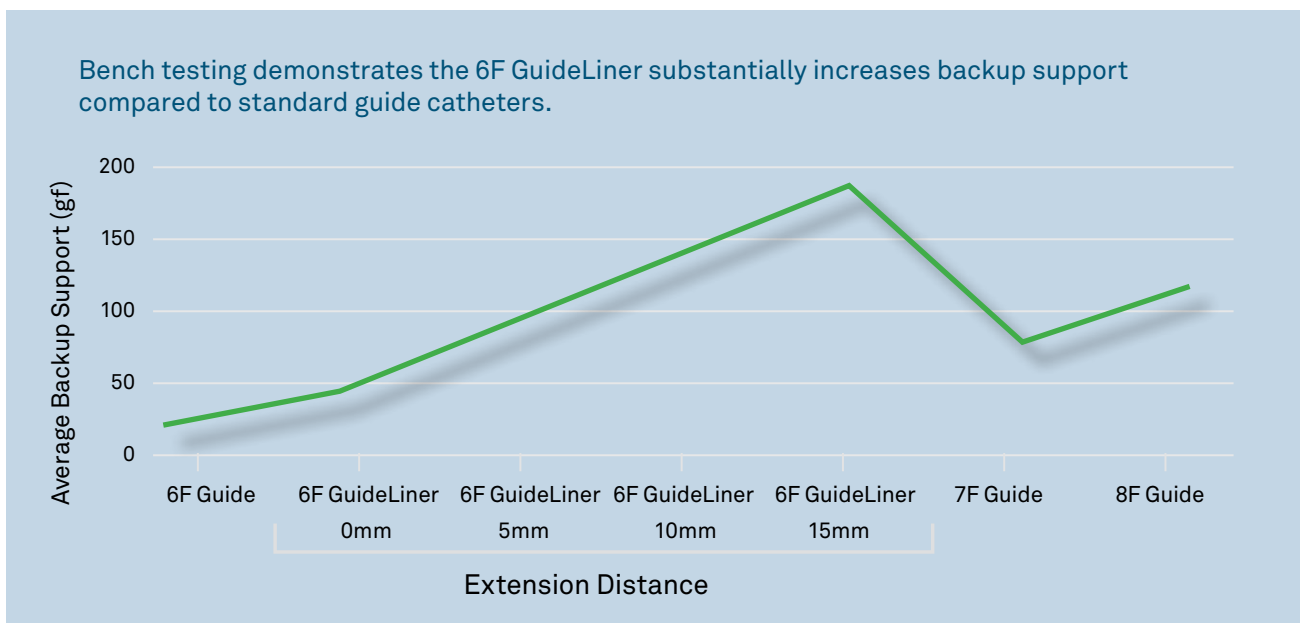
Revolutionary half-pipe design facilitates smooth device entry and seamless delivery. The GuideLiner V3 half-pipe minimizes device/collar interaction by directing and aligning devices through the collar transition.



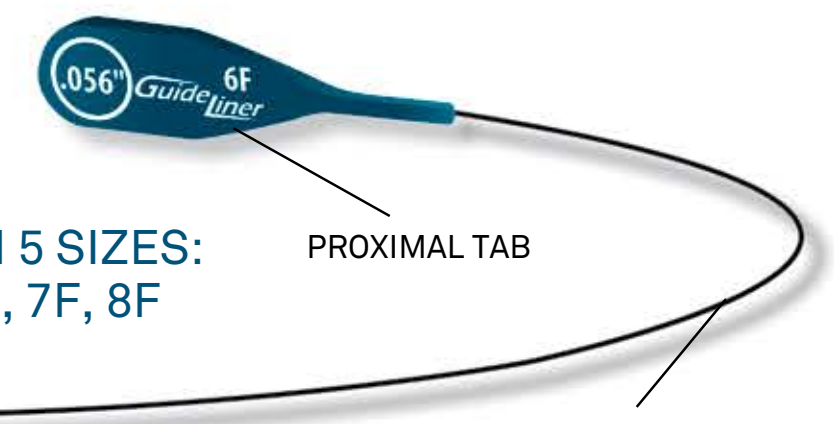
HALF-PIPE

## ADDED BACKUP SUPPORT

With as little as 5mm of extension, the GuideLiner greatly increases the backup support of a 6F guide catheter.



Testing completed by Vascular Solutions, Inc. Data on file.



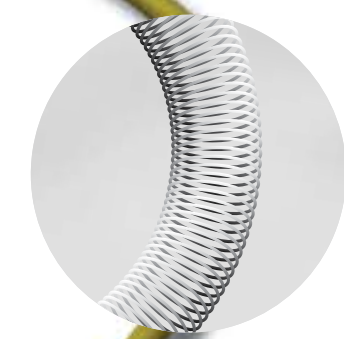
PROXIMAL TAB

AVAILABLE IN 5 SIZES:  
5F, 5.5F, 6F, 7F, 8F

STAINLESS STEEL PUSH ROD  
for strength and kink resistance

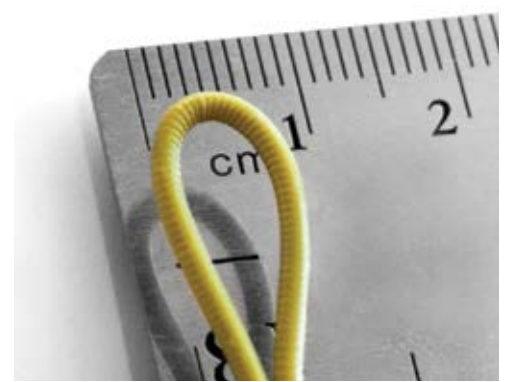
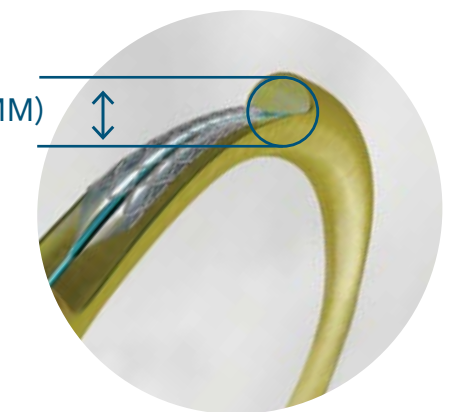
## HIGHLY FLEXIBLE, COIL REINFORCED GUIDE EXTENSION

The GuideLiner's coil reinforced guide extension provides excellent flexibility and kink resistance allowing delivery through tortuous vessels to reach the target area.



GUIDELINER 6F = 0.056" (1.42MM)

COIL REINFORCED DESIGN MAINTAINS LUMINAL INTEGRITY



OPTIMAL KINK RESISTANCE

# GuideLiner<sup>®</sup>

## V3 catheter

GuideLiner catheters are intended to be used in conjunction with guide catheters to access discrete regions of the coronary and/or peripheral vasculature, and to facilitate placement of interventional devices.

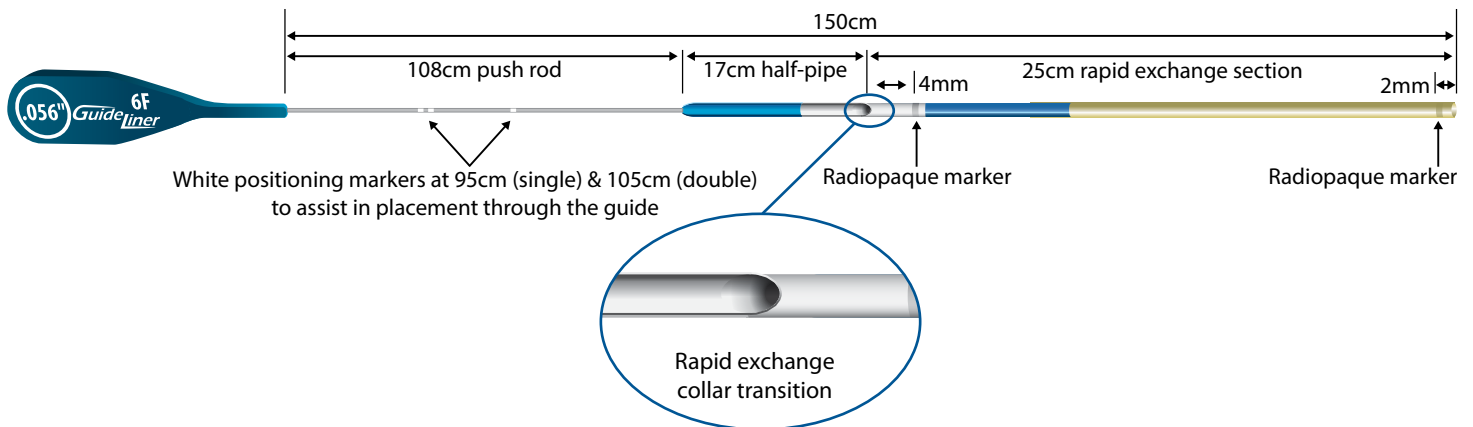


### GuideLiner V3 Ordering Specifications<sup>\*</sup>

Model	Size	Required Guide Catheter I.D.	GuideLiner I.D.	Rapid Exchange Length	Working Length
5569	5F	5F I.D. $\geq 0.056''$ (1.42mm)	0.046" (1.17mm)	25cm	150cm
5570	5.5F	6F I.D. $\geq 0.066''$ (1.68mm)	0.051" (1.30mm)	25cm	150cm
5571	6F	6F I.D. $\geq 0.070''$ (1.78mm)	0.056" (1.42mm)	25cm	150cm
5572	7F	7F I.D. $\geq 0.078''$ (1.98mm)	0.062" (1.57mm)	25cm	150cm
5573	8F	8F I.D. $\geq 0.088''$ (2.24mm)	0.071" (1.80mm)	25cm	150cm

<sup>\*</sup>Packaged in quantities of 1 unit per box.

### GuideLiner V3 Dimensions



Please see the Instructions for Use for a complete listing of the indications, contraindications, warnings and precautions.

CAUTION: Federal Law (U.S.A.) restricts this device to sale by or on the order of a physician.

GuideLiner is a registered trademark of Vascular Solutions, Inc.

©2015 Vascular Solutions, Inc. All rights reserved. ML2858 Rev. C 06/15



**Vascular Solutions, Inc.**  
6464 Sycamore Court North  
Minneapolis, Minnesota 55369 USA

Customer Service:  
United States: 888.240.6001  
International: (001) 763.656.4298  
customerservice@vasc.com  
www.vasc.com