

CODMAN NEURO

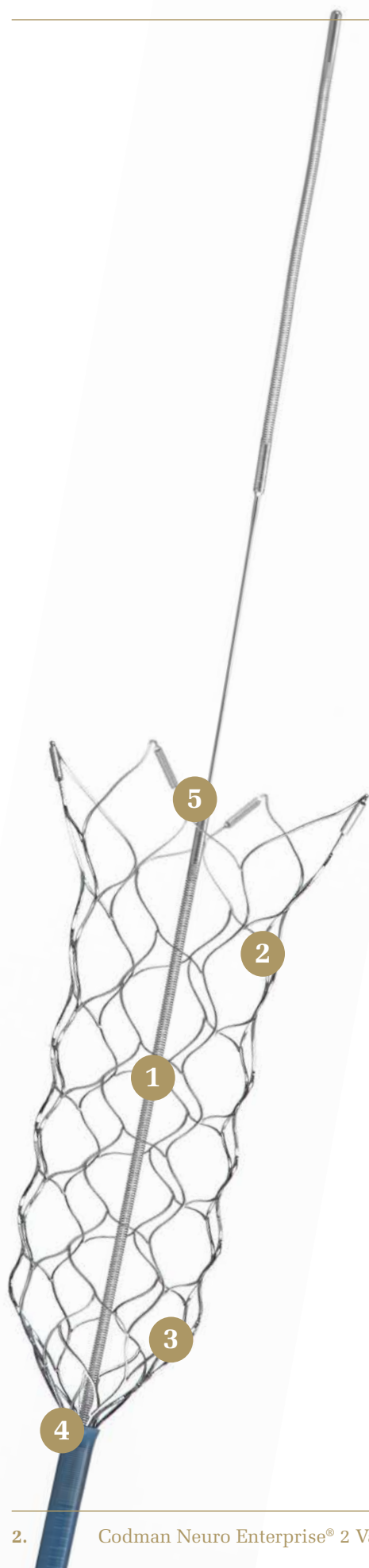


NAVIGATE WITH
PRECISION,
CONFIDENCE and
CONFORMABILITY

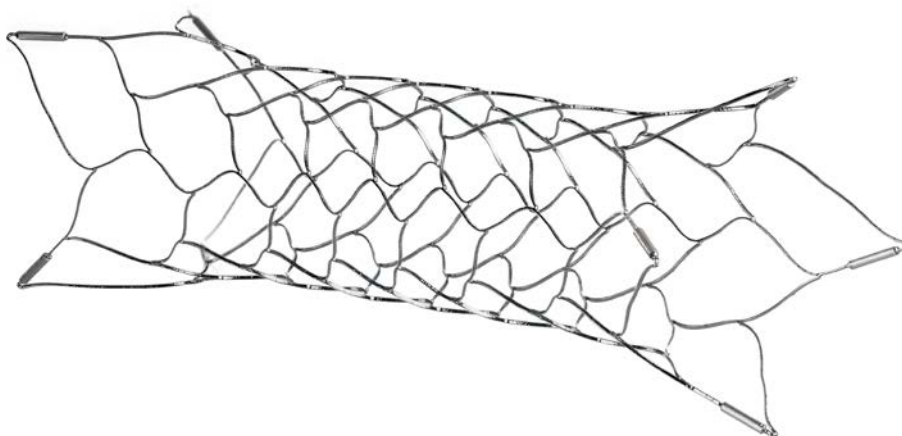
Codman
enterprise[®] 2
vascular reconstruction device



KEY FEATURES



- 1 Stent Positioning Marker**
A fluoroscopic guide helps provide precise deployment at the aneurysm neck
- 2 Enhanced closed cell design**
The closed cells were redesigned allowing the stent to better expand and contract in vessel tortuosity, optimizing wall apposition
- 3 Recapturable stent**
The closed cell design allows for deployment and recapture, facilitating precise placement
- 4 .021" Microcatheter delivery**
Allowing easy, precise navigation 99.8% of the time¹
- 5 Stent markers**
New solid platinum stent markers with increased radiopacity provide clear visibility of the device during and after deployment

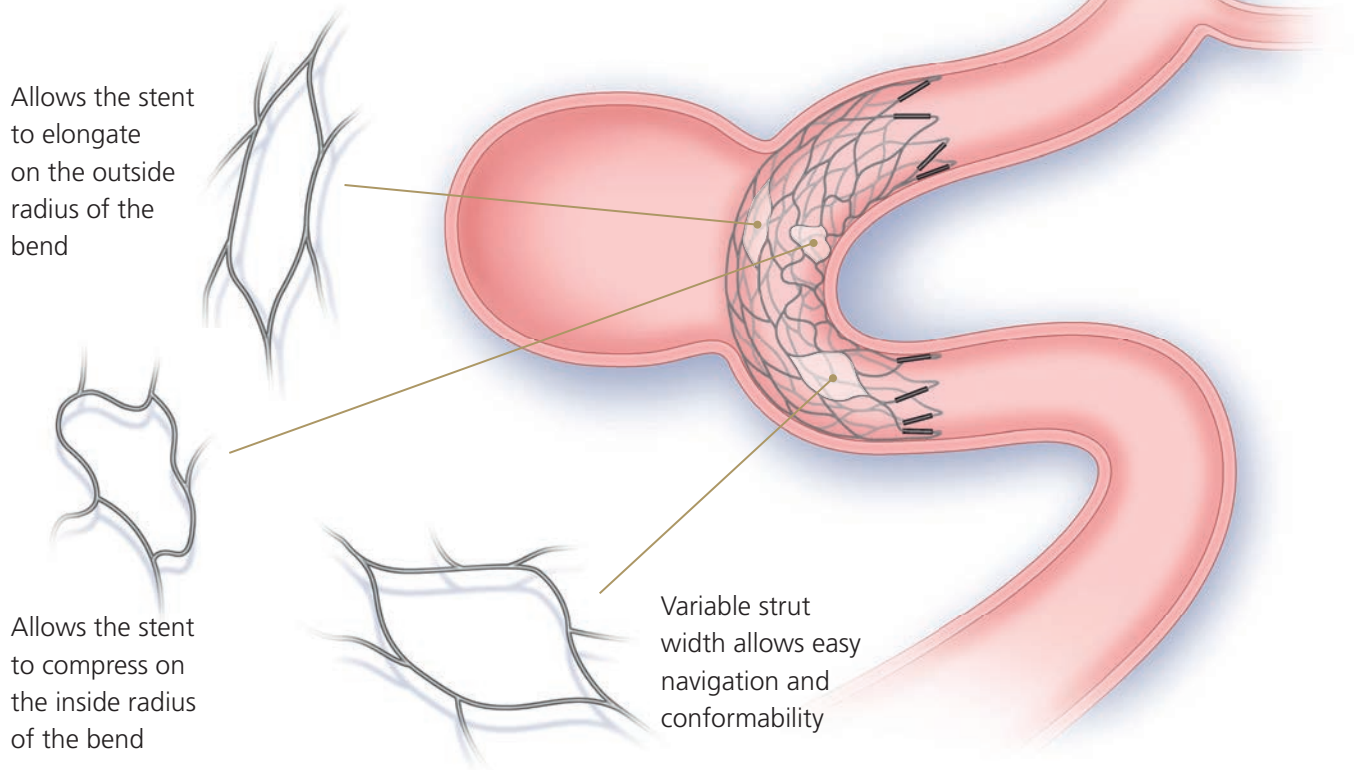


¹King B, et al. J NeuroIntervent Surg 2014;0:1-5. doi:10.1136/neurintsurg-2014-011457
(Data in this study is based on experience with the original CODMAN ENTERPRISE® Vascular Reconstruction Device).

Codman enterprise[®] 2 vascular reconstruction device

Enhanced closed cell design

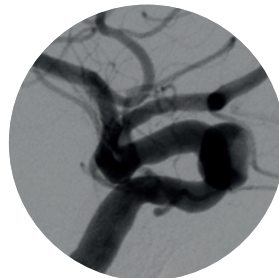
Based upon the principles of the original CODMAN ENTERPRISE[®] stent design, the CODMAN ENTERPRISE[®] 2 Vascular Reconstruction Device has been enhanced to improve conformability and wall apposition while maintaining the significant benefits of its closed cell design.



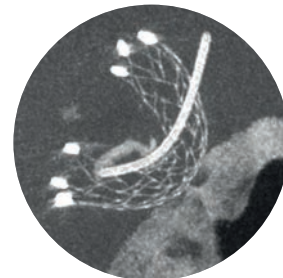
Pre treatment:
Unruptured Basilar Tip Aneurysm



CODMAN ENTERPRISE[®] 2
deployed



Pre Treatment: Unruptured
ICA Aneurysm



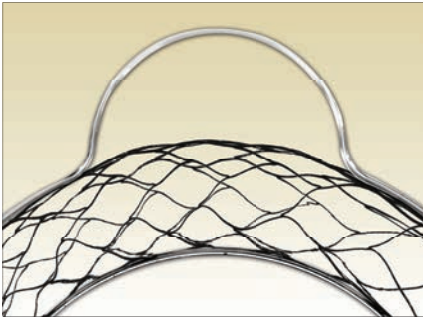
CODMAN ENTERPRISE[®] 2
deployed

Images courtesy of Dr. Masahiro Yoshida, Osaki Citizen Hospital, Japan

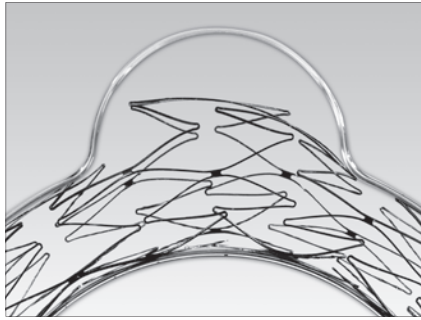
OUTSTANDING COIL MASS SUPPORT

Advanced closed cell stent design

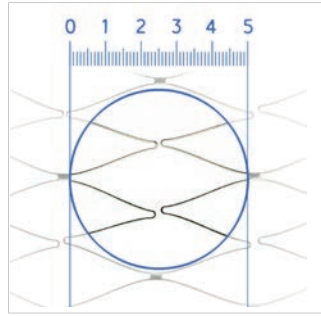
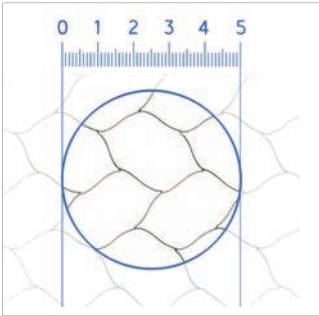
The CODMAN ENTERPRISE® and CODMAN ENTERPRISE® 2 Vascular Reconstruction Devices were designed to better approximate the aneurysm neck and reduce the likelihood of coil compartmentalization and herniation into the lumen.



CODMAN ENTERPRISE® 2 (closed cell design)



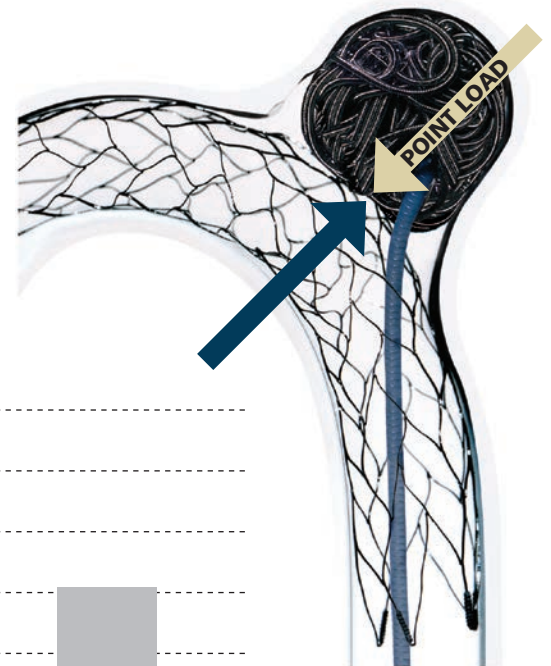
Neuroform™ (open cell design)



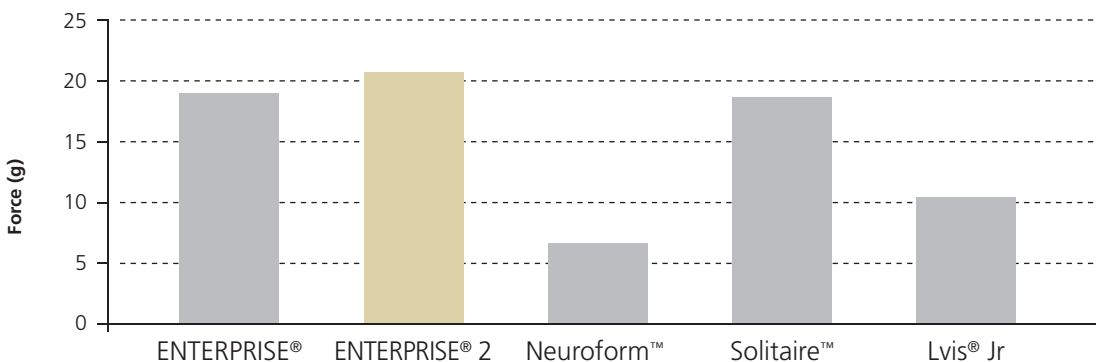
Studies support higher complete occlusion rates and lower recanalization rates compared to Neuroform.¹

Point Load Force

The CODMAN ENTERPRISE® 2 Stent has the highest point load force measurements, demonstrating its ability to effectively support the coil mass.



Point Load Force²

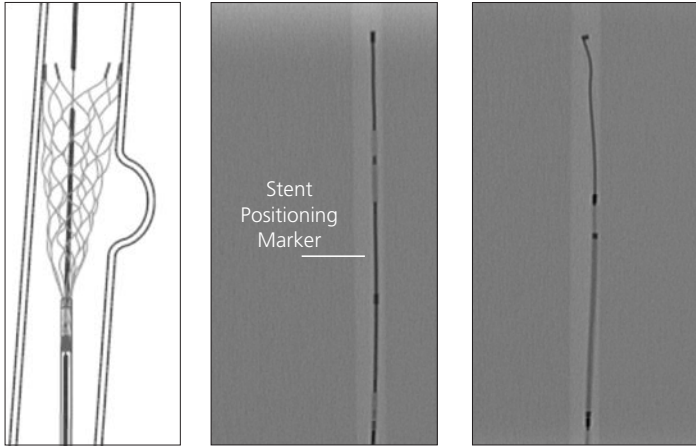


¹King B, et al. J NeuroIntervent Surg 2014;0:1–5. doi:10.1136/neurintsurg-2014-011457
(Data in this study is based on experience with the original CODMAN ENTERPRISE® Vascular Reconstruction Device).
²Codman Neuro internal testing report 103111155.

PRECISE AND STABLE PLACEMENT

Stent Positioning Marker

The CODMAN ENTERPRISE® Stent Positioning Marker helps position the stent precisely at the neck of the aneurysm.

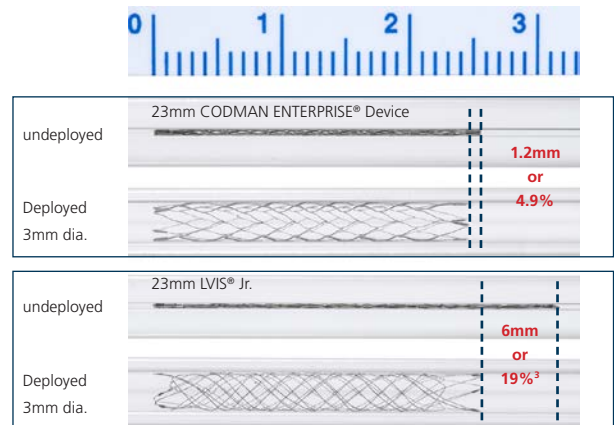


CODMAN ENTERPRISE®
Stent positioning marker

NEUROFORM
No stent positioning marker

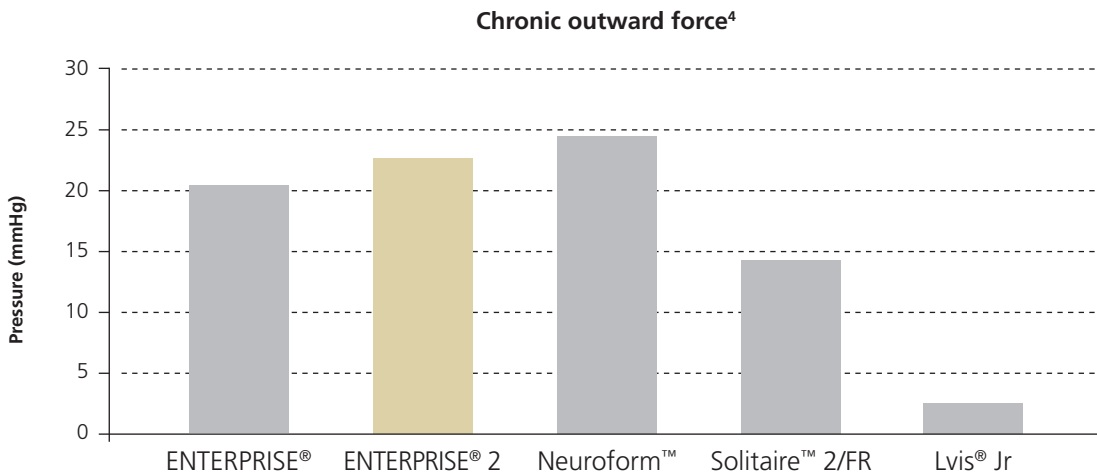
Minimal foreshortening

The CODMAN ENTERPRISE® Stent deploys with minimal foreshortening⁴.



Stable placement

Chronic Outward Force (COF) may help the stent resist migration.



³ % foreshortening calculated from data in Lvis™/ Lvis™ Jr Intraluminal Support Device Instructions for Use 2014-06

⁴ Codman Neuro internal testing report 103111155

* Images above table from Codman Neuro internal testing report 103111155

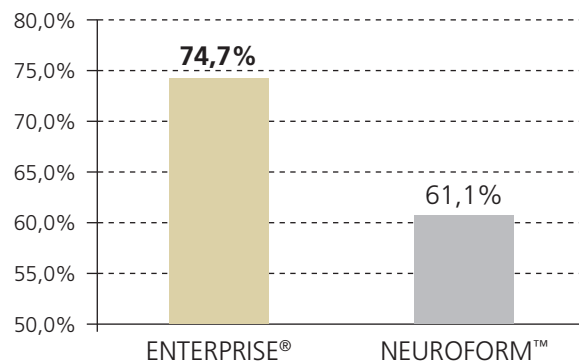
PROVEN CLINICAL PERFORMANCE

A literature review representing the largest and most robust comparison of stent assisted coiling to date, reports **better performance of the CODMAN ENTERPRISE® Vascular Reconstruction Device.**

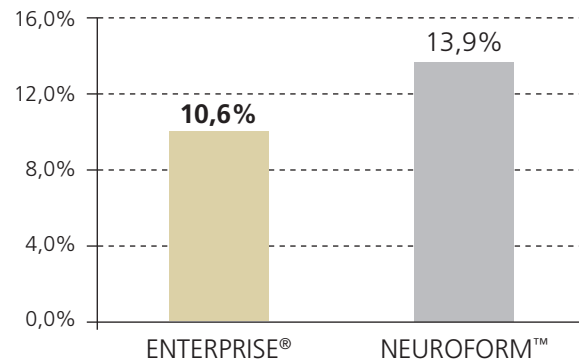
The CODMAN ENTERPRISE® VRD provides reliable performance that you can trust.

Higher rates of complete occlusion (P<0.001)

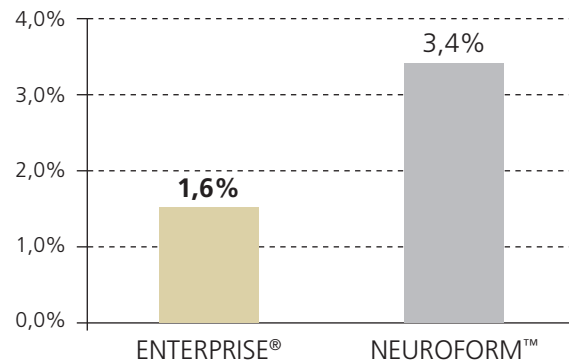
Complete Occlusion of the aneurysm at last follow-up (p < 0,001)



Lower rates of recanalization (P = 0.02)



Lower rates of ICH (P=0.001)



Source: King B, et al. Journal of Neuro-Interventional Surgery 2014; 0:1-5. doi:10.1136/neurintsurg-2014-011457
(Data in this study is based on experience with the original ENTERPRISE® stent)

PROVEN CLINICAL PERFORMANCE

47 peer-reviewed studies

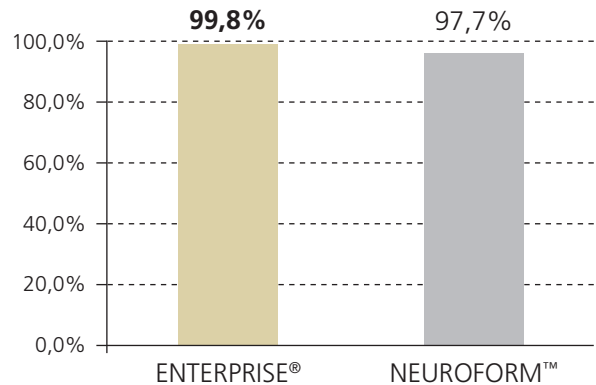
4,238 aneurysms

4,039 patients

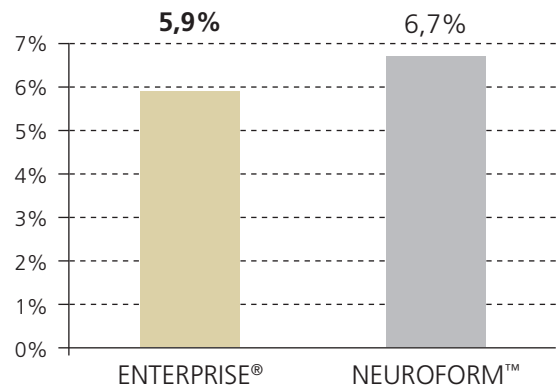
14.1 months mean follow-up

Studies from 2004 through March, 2014

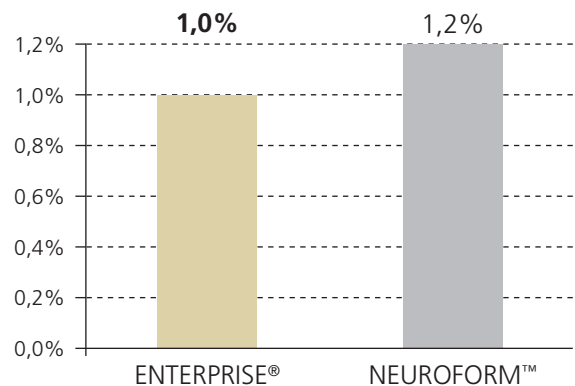
Higher rates of deployment success (P<0.001)



Lower rates of thromboembolic events* (P=0.37)



Lower rates of in-stent stenosis (P=0.75)

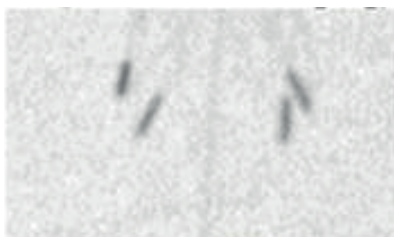


* TE events defined as TIA stroke, or development of asymptomatic thrombus during procedure. (Data in this study is based on experience with the original ENTERPRISE® stent)

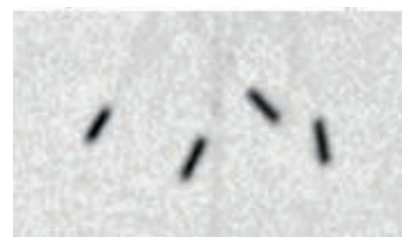
IMPROVED EASE OF USE

Improved Stent markers

New solid platinum markers provide increased radiopacity during and after deployment.



CODMAN ENTERPRISE® Stent



CODMAN ENTERPRISE® 2 Stent

New Self Flushing Introducer

- Self-flushing introducer facilitates ease of use
- Tapered distal end to match PROWLER SELECT® Plus Microcatheter

Fully insert the introducer and flush simultaneously



Recapturability

The closed cell design of the CODMAN ENTERPRISE® stent / ENTERPRISE® 2 stent allows you to deploy and recapture with confidence for when you need that second chance.

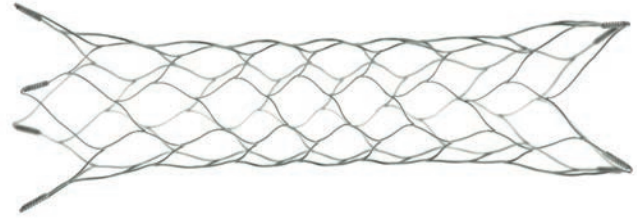


CODMAN ENTERPRISE® Stent



NEUROFORM Stent

Over 110,000 CODMAN ENTERPRISE® Stent units have been distributed globally since 2006*.



PRODUCT SPECIFICATIONS

CODMAN ENTERPRISE® 2 Vascular Reconstruction Device				
Distal Tip Catalog Code	No Distal Tip Catalog Code	Min. Indicated Parent Vessel Diameter (mm)	Max. Indicated Parent Vessel Diameter (mm)	Length at Max Indicated Parent Vessel Diameter
ENC401612	ENC401600	2.0	4.0	16
ENC402312	ENC402300	2.0	4.0	23
ENC403012	ENC403000	2.0	4.0	30
ENC403912	ENC403900	2.0	4.0	39

MICROCATHETER COMPATIBILITY

PROWLER SELECT® Plus Microcatheters						
Catalog Codes	Shape	OD (prox./distal)	ID (inches)	Usable Length (cm)	Distal Length (cm)	Tip Markers
606S255X	Straight	2.8F/2.3F	0.021	150	5	2
606S255FX	45	2.8F/2.3F	0.021	150	5	2
606S255MX	90	2.8F/2.3F	0.021	150	5	2
606S255JX	J	2.8F/2.3F	0.021	150	5	2

PROWLER SELECT Plus Microcatheter is the only microcatheter tested for compatibility with the CODMAN ENTERPRISE® 2 Stent. The CODMAN ENTERPRISE® 2 Stent requires a 0.021" microcatheter inner diameter.

*Codman shipment data as per 30/10/2015



Johnson & Johnson Medical Ltd.
Pinewood Campus, Nine Mile Ride
Wokingham, RG40 3EW
United Kingdom



Products may be manufactured at one of the following:

Codman & Shurtleff, Inc.
325 Paramount Drive
Raynham, MA 02767-0350
USA

Medos International SARL
Chemin-Blanc 38
CH-2400 LeLocle
Switzerland

Codman NeuroScience SARL
Rue Girardet 29
CH-2400 LeLocle
Switzerland

www.depuyssynthes.com

CODMAN NEURO



Codman Neuro is a trading division of Johnson & Johnson Medical Ltd.

Registered Office:

PO Box 1988, Simpson Parkway,
Livingston, West Lothian, EH54 0AB,
Registered in Scotland, No.SC 132162

This publication is not intended for distribution in the USA.

