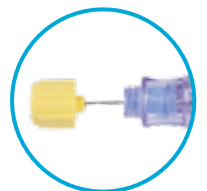
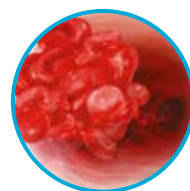


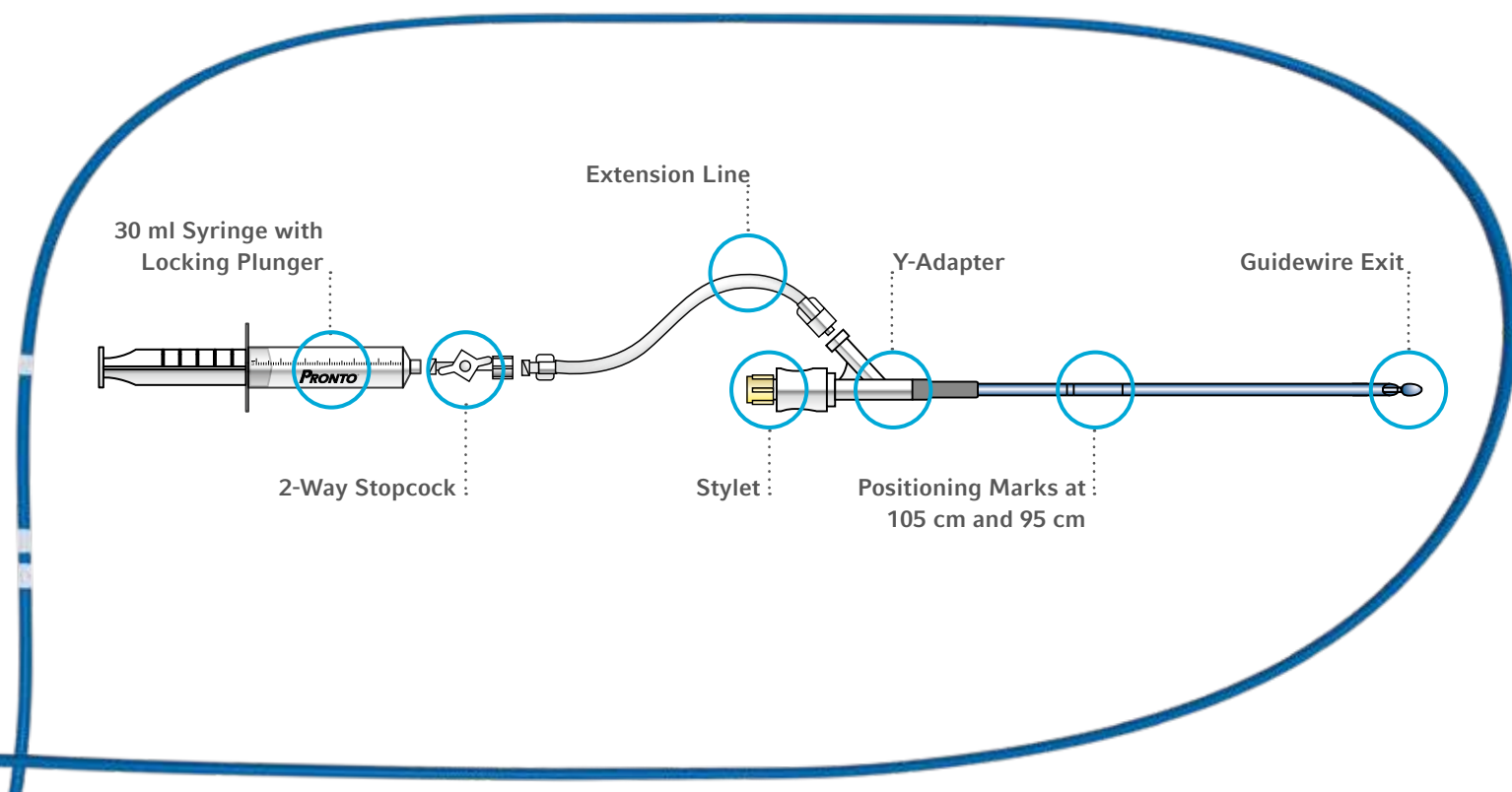
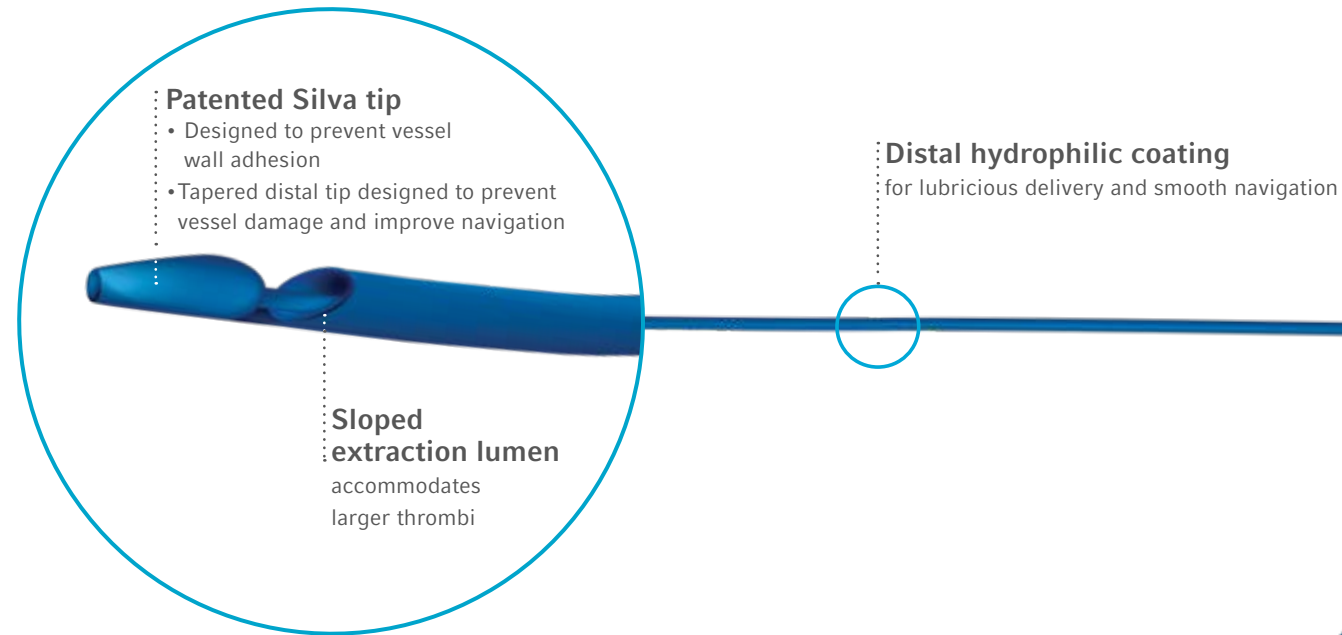
# Pronto<sup>®</sup> LP Extraction Catheter

Low-Profile Aspiration with a 5 Fr. Guide Compatibility Option



## Advanced Design In Aspiration

The 0.014" compatible Pronto® LP Catheter combines the extraction power of the Pronto® design in a low, 0.053" crossing profile for use in vessels  $\geq 1.5$  mm in diameter. Two versions are available, offering  $\geq 6$  Fr. or  $\geq 5$  Fr. guide compatibility for a range of clinical applications.



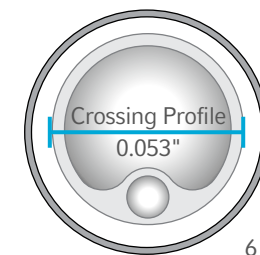
## Low-Profile Options With Exceptional Performance

### Original Pronto® LP Catheter (Model 5010)

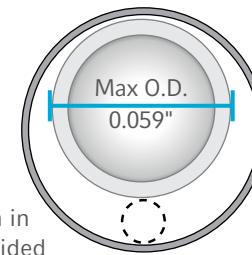
- Allows for the delivery of a second guidewire or contrast around the aspiration catheter in a  $\geq 6$  Fr. guide catheter
- For delivery into distal, tortuous vessels
- Round, braided shaft and stylet for kink resistance

### 5 Fr. Guide Compatible Pronto® LP Catheter (Model 5015)

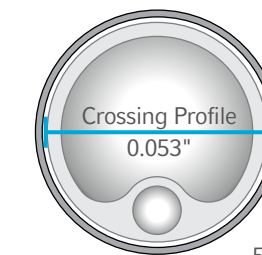
- Innovative low-profile design offers 5 Fr. guide compatibility
- U-channel shaft design engineered to enhance aspiration performance



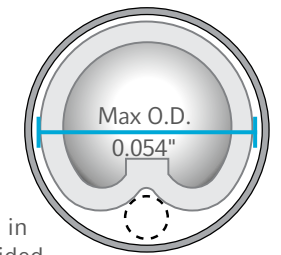
Distal Shaft



Proximal Shaft



Distal Shaft



Proximal Shaft

### Specifications and Ordering Information

DESCRIPTION	MODEL	OUTER DIAMETER	CROSSING PROFILE	PROXIMAL SHAFT SHAPE	GUIDE CATHETER COMPATIBILITY	EXTRACTION LUMEN AREA	MINIMUM VESSEL DIAMETER	BOX QUANTITY
Pronto® LP	5010	0.059" (1.50 mm)	0.053"	Round	6 Fr. ( $\geq 0.066$ " )	0.69 mm <sup>2</sup>	1.50 mm	1
Pronto® LP 5 Fr.	5015	0.054" (1.37 mm)	0.053"	U-Channel	5 Fr. ( $\geq 0.056$ " )	0.69 mm <sup>2</sup>	1.50 mm	1

Packaged in quantities of 1 unit per box.

The Pronto® LP Catheter comes complete with two locking 30 ml aspiration syringes and a 70µm filter basket.

The Pronto® LP Extraction Catheter is indicated for the removal of fresh, soft emboli and thrombi from vessels in the coronary and peripheral system.

### Preloaded stylet

can easily be removed for aspiration through a separate port, and offers pushability and kink resistance during delivery

Teleflex is a global provider of medical technologies designed to improve the health and quality of people's lives. We apply purpose-driven innovation – a relentless pursuit of identifying unmet clinical needs – to benefit patients and healthcare providers. Our portfolio is diverse, with solutions in the fields of vascular and interventional access, surgical, anesthesia, cardiac care, urology, emergency medicine and respiratory care. Teleflex employees worldwide are united in the understanding that what we do every day makes a difference. For more information, please visit [teleflex.com](http://teleflex.com).

Teleflex is the home of Arrow®, Deknatel®, Hudson RCI®, LMA®, Pilling®, Rüschi®, UroLift®, and Weck® – trusted brands united by a common sense of purpose.

### Corporate Office

Phone +1 610 225 6800, 550 E. Swedesford Road, Suite 400, Wayne, PA 19087, USA

### Regional Offices

**United States:** Phone +1 919 544 8000, Toll Free 866 246 6990, [cs@teleflex.com](mailto:cs@teleflex.com), 3015 Carrington Mill Boulevard, Morrisville, NC 27560, USA

**Latin America:** Phone +1 919 433 4999, [la.cs@teleflex.com](mailto:la.cs@teleflex.com), 3015 Carrington Mill Boulevard, Morrisville, NC 27560, USA

**International:** Phone +353 (0)9 06 46 08 00, [orders.intl@teleflex.com](mailto:orders.intl@teleflex.com), Teleflex Medical Europe Ltd., IDA Business and Technology Park, Dublin Road, Athlone, Co Westmeath, Ireland

**Australia** 1300 360 226

**Austria** +43 (0)1 402 47 72

**Belgium** +32 (0)2 333 24 60

**Canada** +1 (0)800 387 9699

**China (Shanghai)** +86 (0)21 6163 0965

**China (Beijing)** +86 (0)10 6418 5699

**Czech Republic** +420 (0)495 759 111

**France** +33 (0)5 62 18 79 40

**Germany** +49 (0)711 2090 8000

**Greece** +30 210 67 77 717

**India** +91 (0)44 2836 5040

**Italy** +39 0362 58911

**Japan** +81 (0)3 6632 3600

**Korea** +82 2 536 7550

**Mexico** +52 55 5002 3500

**Netherlands** +31 (0)88 00 215 00

**New Zealand** 0800 601 100

**Poland** +48 22 4624032

**Portugal** +351 22 541 90 85

**Singapore** (SEA non-direct sales countries) +65 6439 3000

**Slovak Republic** +421 (0)3377 254 28

**South Africa** +27 (0)11 807 4887

**Spain** +34 918 300 451

**Switzerland** +41 (0)31 818 40 90

**United Kingdom** +44 (0)1494 53 27 61

**For more information, please visit [teleflex.com](http://teleflex.com).**

Please see the Instructions for Use for a complete listing of the indications, contraindications, warnings and precautions

CAUTION: Federal (USA) law restricts this device to sale by or on the order of a physician.

Teleflex, the Teleflex logo, and Pronto are trademarks or registered trademarks of Teleflex Incorporated or its affiliates, in the U.S. and/or other countries.

Information in this material is not a substitute for the product Instructions for Use. Not all products may be available in all countries. Please contact your local representative. Revised: 08/2019

© 2019 Teleflex Incorporated. All rights reserved. MC-005604 Rev 0.1