

CODMAN NEURO



THE ENVOY[®] FAMILY OF GUIDING CATHETERS

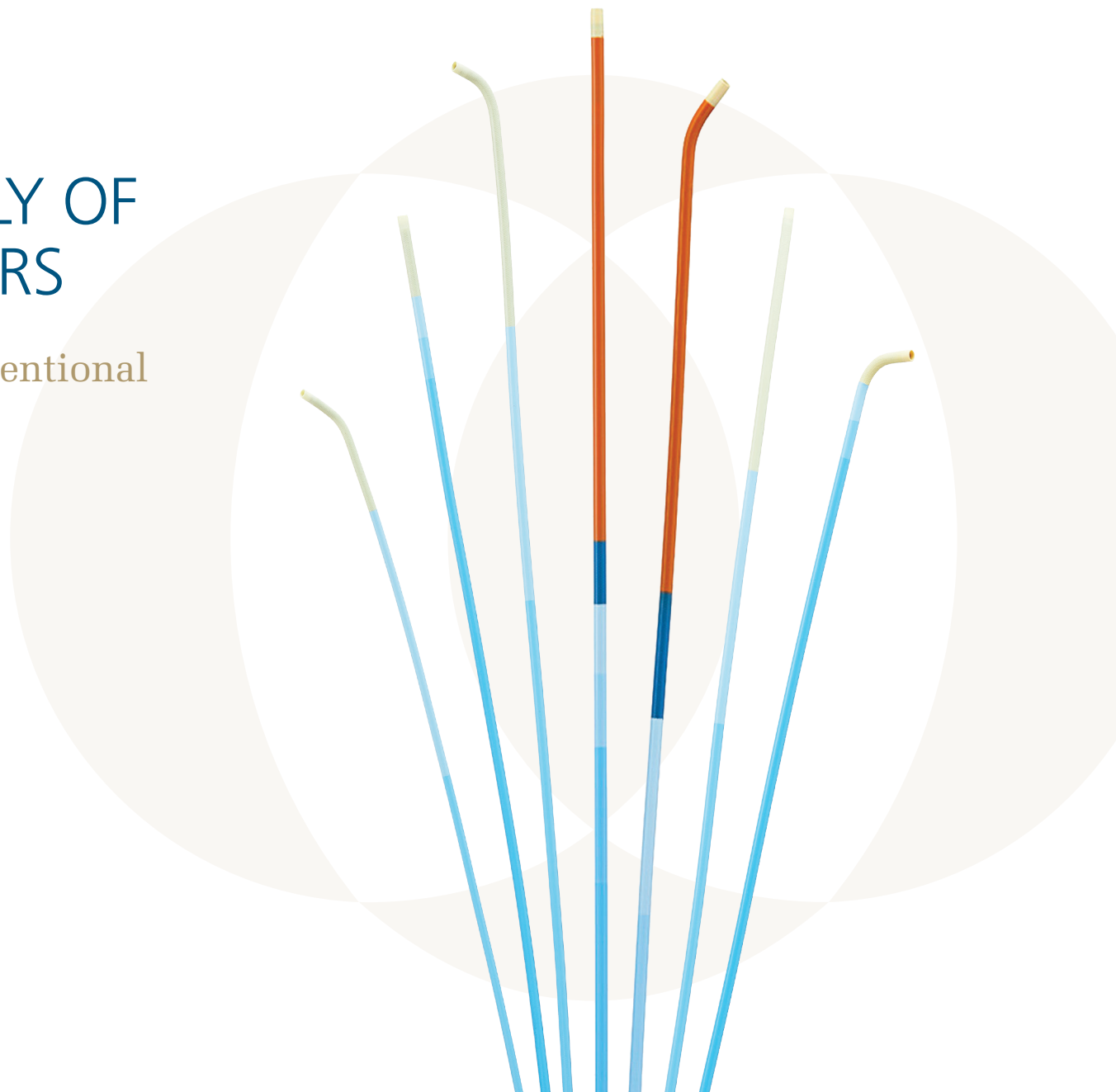
Supporting your neurointerventional access needs

ENVOY[®]
guiding catheter

ENVOY[®] **XB**
guiding catheter

ENVOY[®] **DA**
guiding catheter

ENVOY[®] **DA XB**
guiding catheter



ENVOY[®] FAMILY OF GUIDING CATHETERS

Innovating in guiding catheter technology and building on the legacy you've counted on for more than 20 years.

ENVOY[®]
guiding catheter

ENVOY[®] **XB**
guiding catheter

ENVOY[®] **DA**
guiding catheter

ENVOY[®] **DA XB**
guiding catheter



SOFT DISTAL TIP WITH EXCELLENT VISIBILITY

Proprietary BRITE TIP Technology offers excellent visibility while maintaining a soft distal tip¹





EXTRA BACK-UP SUPPORT

Select configurations designed with extra proximal support to minimize back-up throughout the intervention¹



BALANCE OF FLEXIBILITY AND SUPPORT

End-to-End braided construction provides flexibility for vessel selection and allows for maximum flow rate while maintaining catheter support for stable interventions¹



SMOOTH DEVICE INTRODUCTION

Lubricious PTFE liner enables smooth introduction of devices throughout the intervention¹



Our trusted line of guiding catheters designed and indicated for neurovascular.

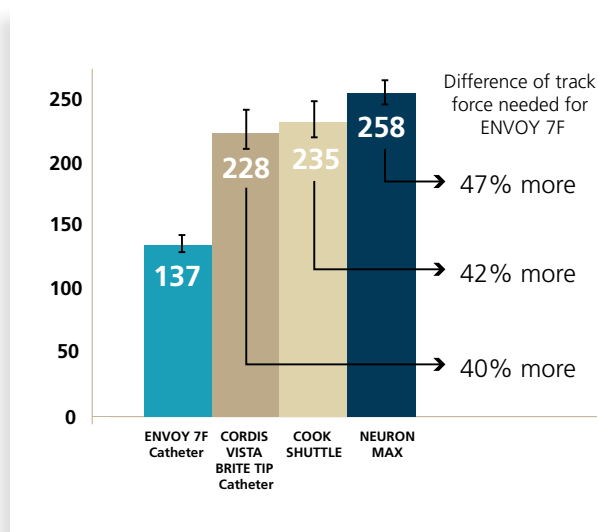
LARGE INNER LUMEN

5F	6F	7F
.056"	.070"	.078"

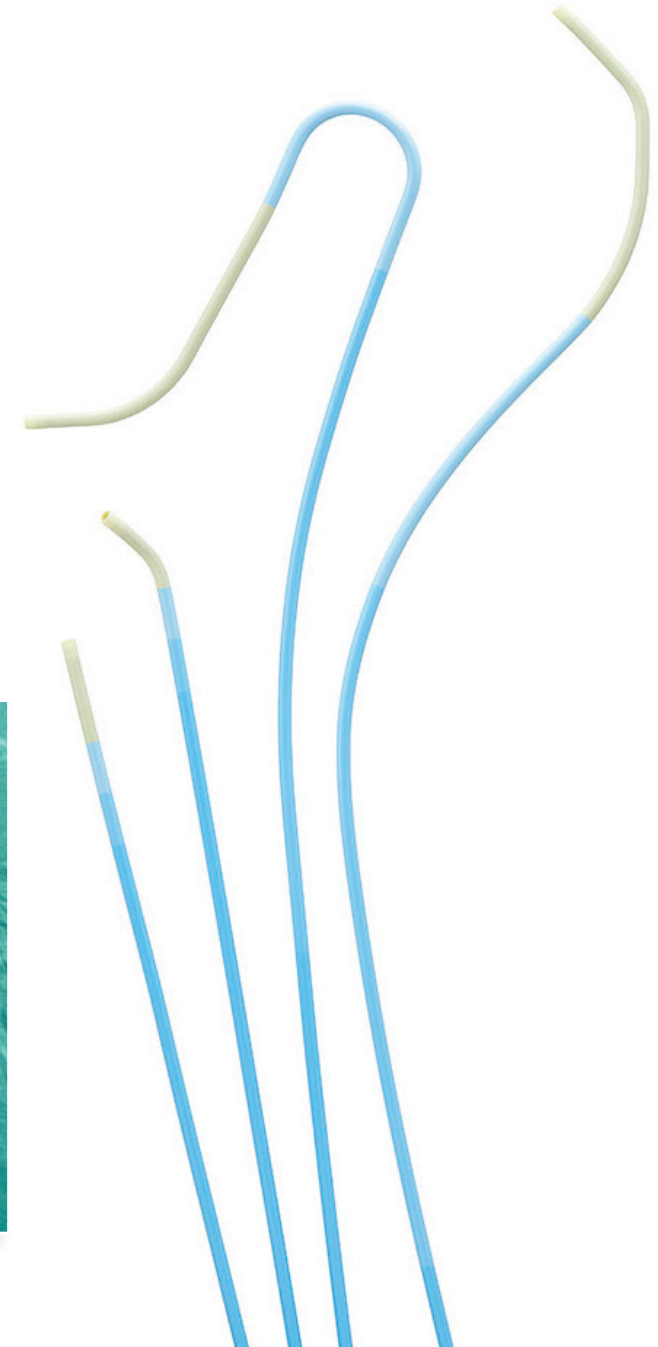
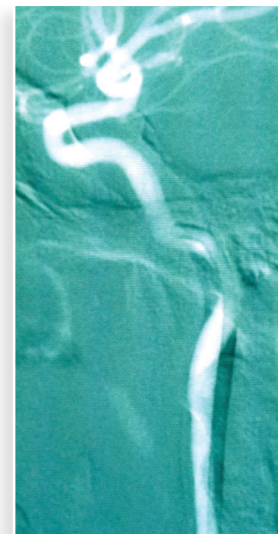
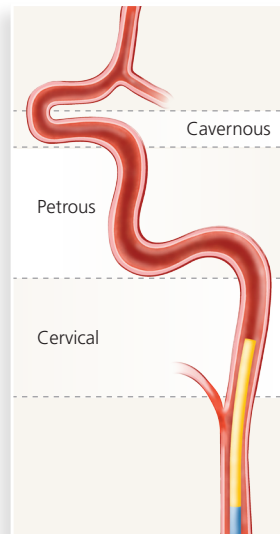
Now offered in 7F for additional space and support.

EXCELLENT TRACKABILITY

7F ENVOY® Catheter requires less work to track compared to other 7F guiding catheters and 6F long sheaths¹.



Work required to track 6cm on track model, n=5

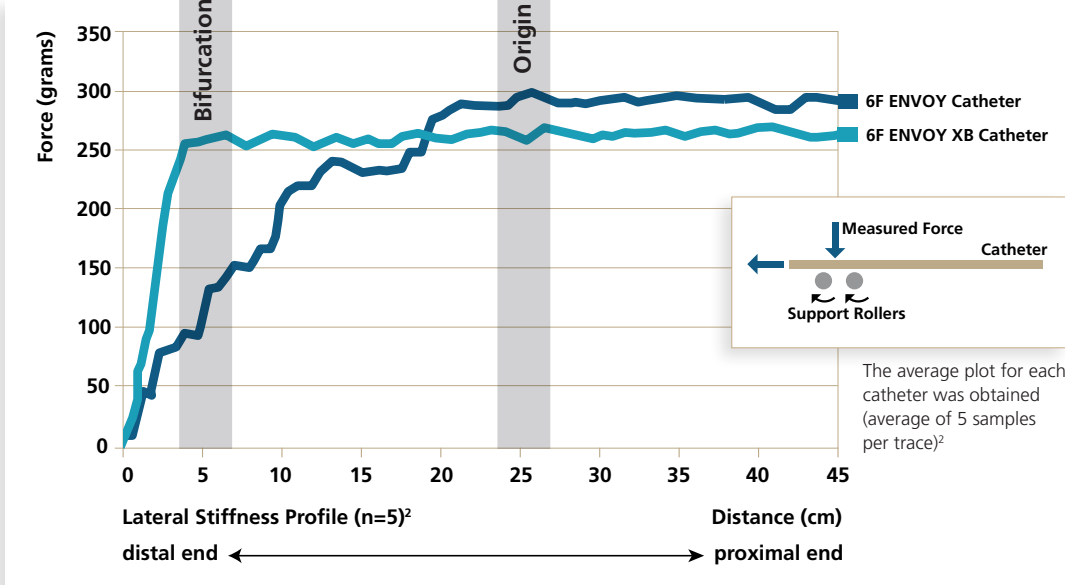
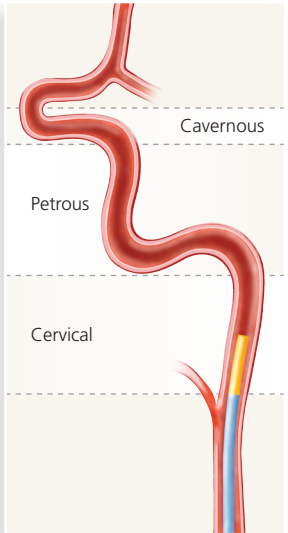
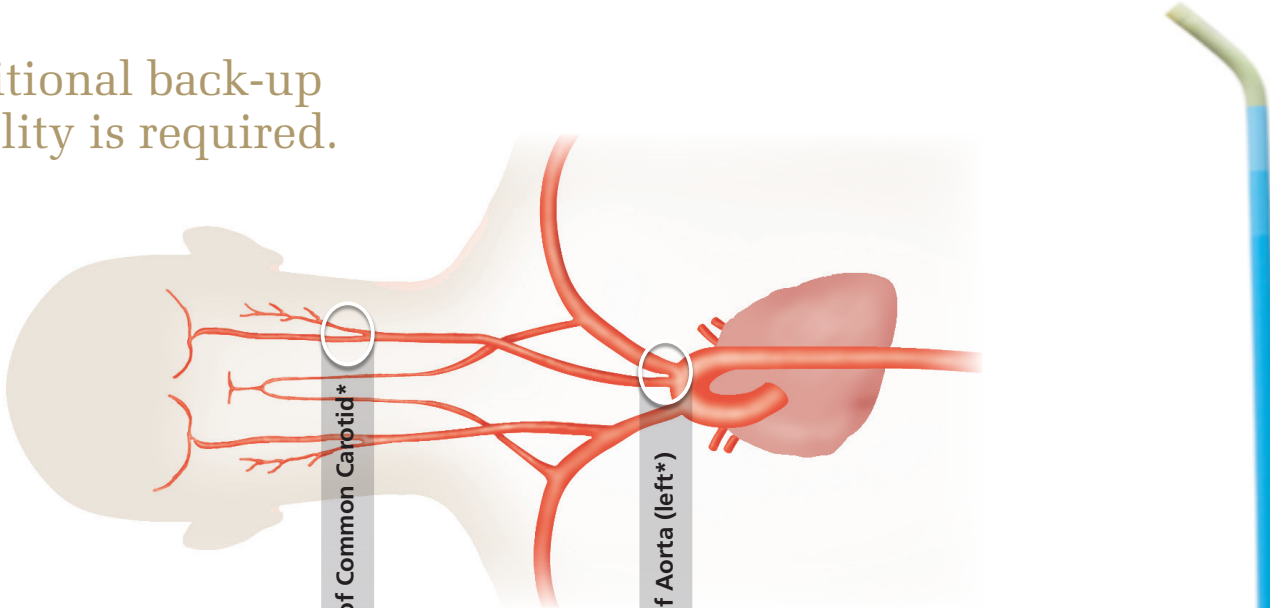




Designed to provide additional back-up support when more stability is required.

IMPROVED BACK-UP SUPPORT

ENVOY XB Catheter has the same end-to-end braided construction as the ENVOY Catheter with an estimated 27% additional back-up support at the bifurcation of the common carotid^{1*}.



ENVOY XB guide catheters are available in 6F.

*Anatomical placement is estimation based on common adult anatomy.

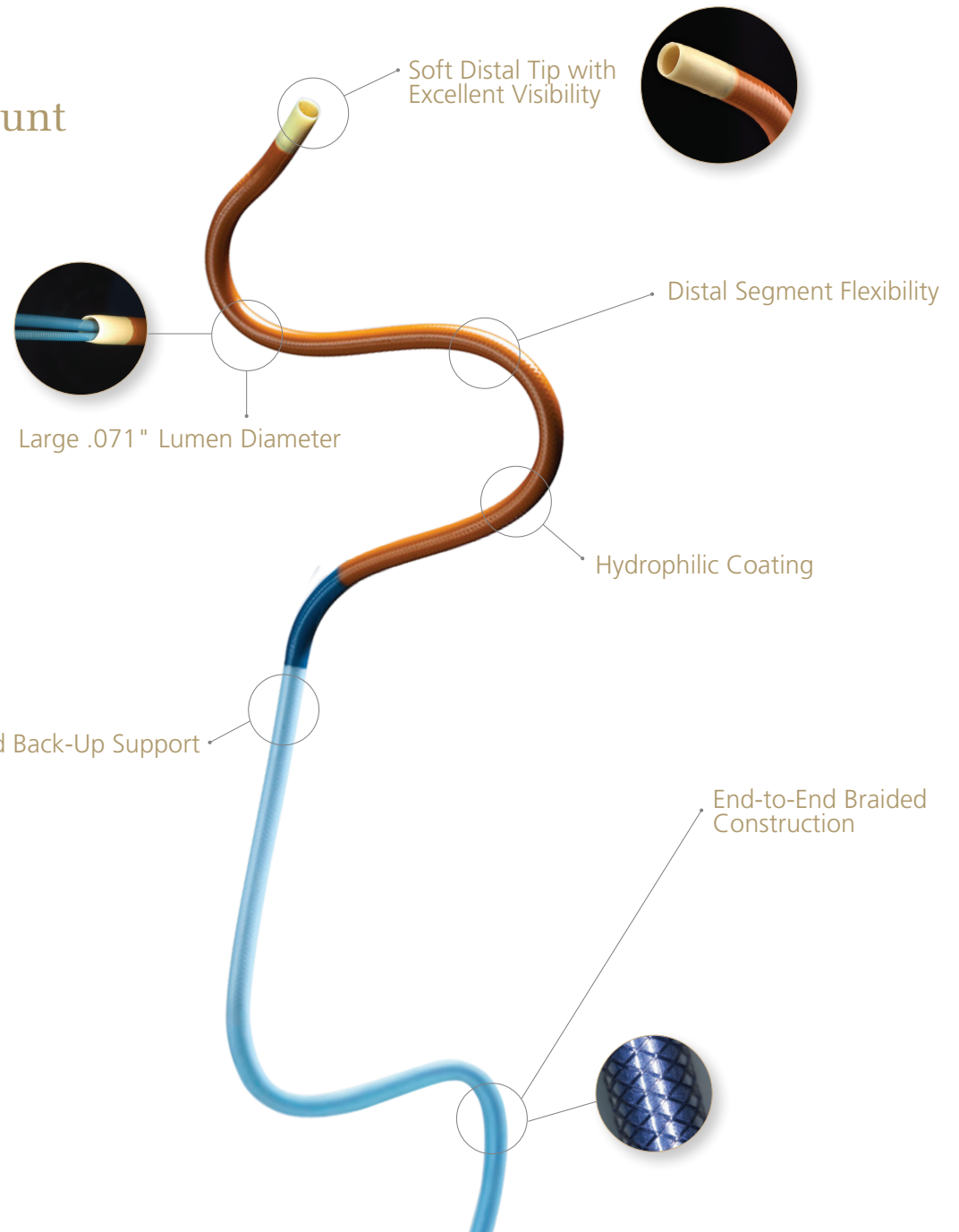
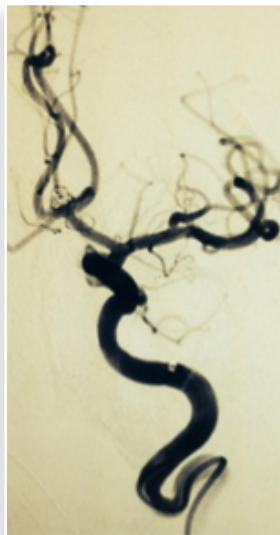
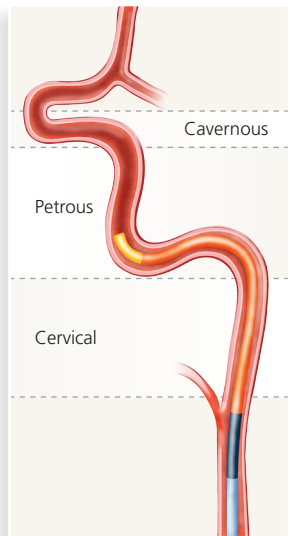
DISTAL ACCESS

ENVOY® DA guiding catheter

The ENVOY Guiding Catheter you count on, designed for distal access.

DISTAL SEGMENT FLEXIBILITY TO ACHIEVE CATHETER SUPPORT

Distal 8cm flexible section allows access to more distal anatomy to achieve geometric anchoring in petrocavernous ICA and provide support for a STABLE procedure¹.

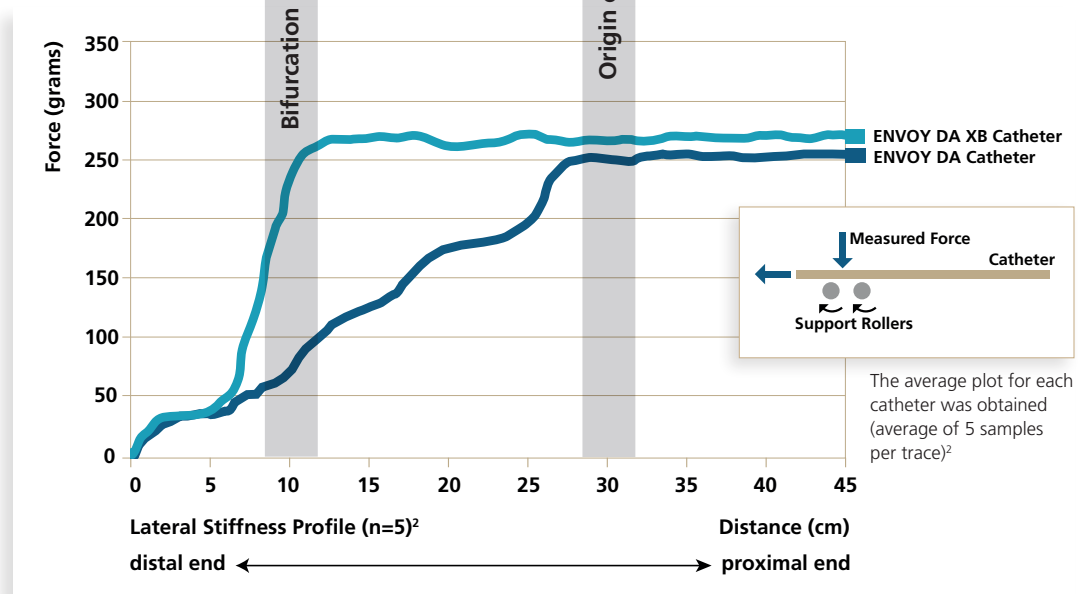
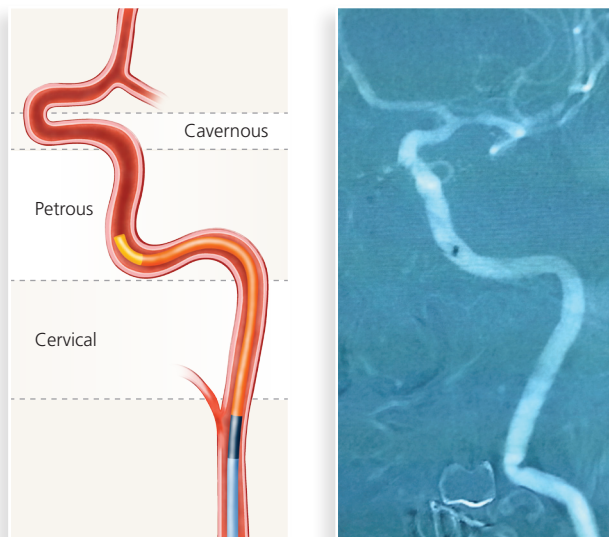
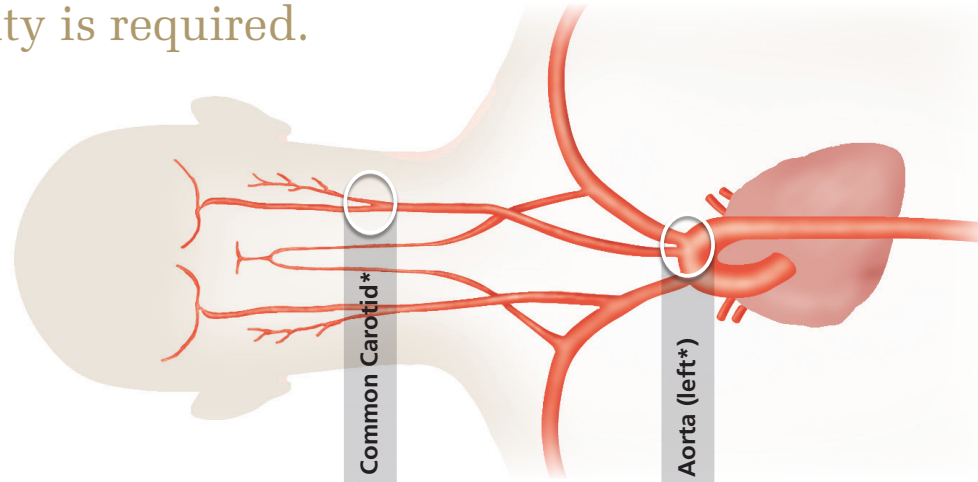


ENVOY® DA XB guiding catheter

Designed to provide additional proximal support when more stability is required.

IMPROVED BACK-UP SUPPORT

ENVOY DA XB Catheter has the same end-to-end braided construction as the ENVOY DA Catheter with an estimated 20% additional back-up support at the bifurcation of the common carotid^{1*}.



ENVOY DA XB guide catheters are available in 6F

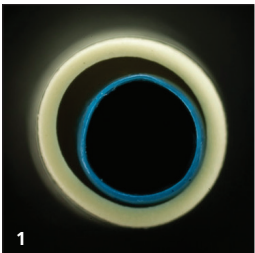
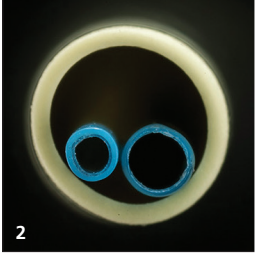
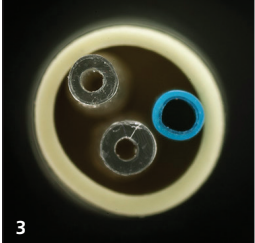
*Anatomical placement is estimation based on common adult anatomy

COMPATIBILITY



The ENVOY Family of Guiding Catheters allows for compatibility with multiple devices providing excellent versatility during an intervention¹.

Recommended Compatibility Chart with the ENVOY Family of Guide Catheters

	5F ENVOY Catheter	6F ENVOY Catheter	6F ENVOY DA Catheter	7F ENVOY Catheter
Inner Diameter	.056"	.070"	.071"	.078"
 <p>One Device Compatibility combined outer diameter <i>Requires .003" clearance</i></p>	.053" or less (4.0F)	.067" or less (5.1F)	.068" or less (5.2F)	.075" or less (5.7F)
 <p>Two Device Compatibility combined outer diameter <i>Requires .002" clearance</i></p>	.054" or less (4.1F)	.068" or less (5.2F)	.069" or less (5.3F)	.076" or less (5.8F)
 <p>Three device compatibility combined outer diameter <i>Requires area less than .0025 sq in allowing for contrast</i></p>	Not Applicable	Not Applicable	Not Applicable	.097" (7.4F)

1. 5F REVIVE® IC Intermediate Catheter 2. PROWLER® 27 and PROWLER® SELECT® LP ES Microcatheter 3. ASCENT™ Occlusion Balloon Catheter and PROWLER Microcatheter
*For three device compatibility, .097" refers to the linear addition of devices inside of the guiding catheter. This dimension is for calculation purposes only. Refer to Instructions for Use for product details.

Multiple Shapes to Treat Different Anatomy

Straight



MPD



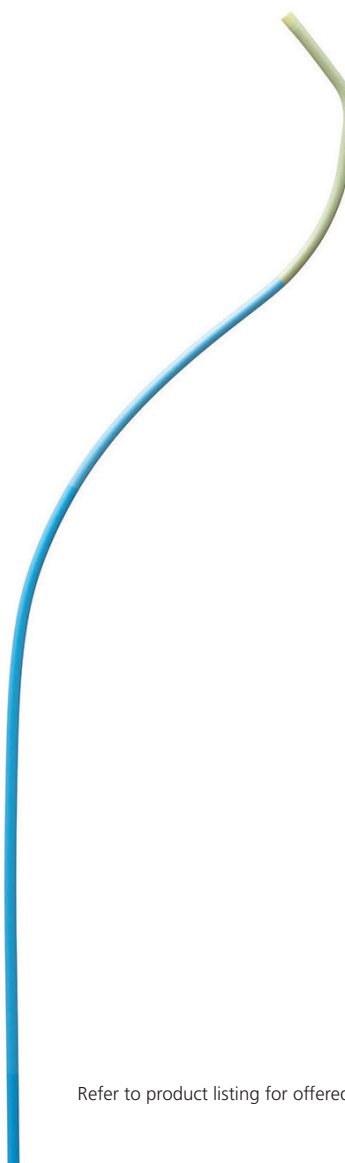
MPC



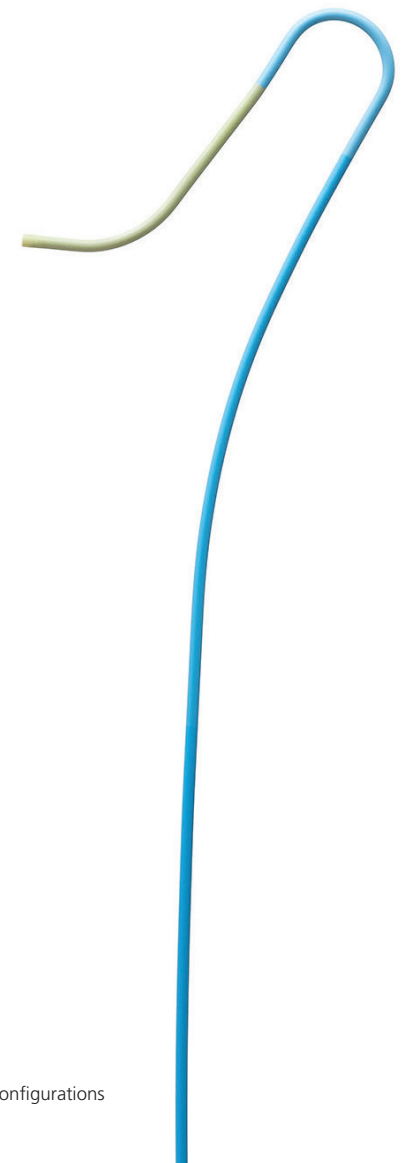
Cerebral Modified
(Burke)



Headhunter 1



Simmons 2



Refer to product listing for offered configurations

5 FRENCH

Catalog No.	Outer Diameter (French)	Inner Diameter (in)	Working Length (cm)	Tip Shape	Shape Description
5F ENVOY Catheter					
55625000	5	0.056	100	CBL	Modified Cerebral (Burke)
55625090	5	0.056	90	CBL	Modified Cerebral (Burke)
55625400	5	0.056	100	H1	Headhunter 1
55625490	5	0.056	90	H1	Headhunter 1
55625600	5	0.056	100	MPC	Multipurpose C
55625690	5	0.056	90	MPC	Multipurpose C
55625800	5	0.056	100	MPD	Multipurpose D
55625890	5	0.056	90	MPD	Multipurpose D
55626000	5	0.056	100	STR	Straight
55626090	5	0.056	90	STR	Straight

Available in
5 shapes

—
Straight

—
Multipurpose C

—
Multipurpose D

—
Modified

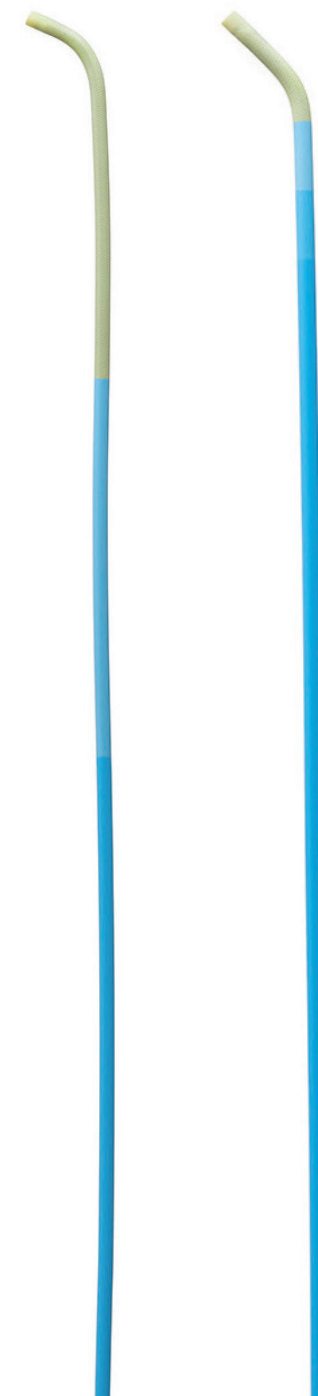
—
Headhunter 1

Contact your Sales Representative for pricing information.

Representation of 5/6/7 French elements



Catalog No.	Outer Diameter (French)	Inner Diameter (in)	Working Length (cm)	Tip Shape	Shape Description
6F ENVOY Catheter					
67026090	6	0.070	90	STR	Straight
67026000	6	0.070	100	STR	Straight
67025690	6	0.070	90	MPC	Multipurpose C
67025600	6	0.070	100	MPC	Multipurpose C
67025890	6	0.070	90	MPD	Multipurpose D
67025800	6	0.070	100	MPD	Multipurpose D
67025090	6	0.070	90	CBL	Modified Cerebral (Burke)
67025000	6	0.070	100	CBL	Modified Cerebral (Burke)
67025490	6	0.070	90	H1	Headhunter 1
67025400	6	0.070	100	H1	Headhunter 1
67025290	6	0.070	90	SIM2	Simmons 2
67025200	6	0.070	100	SIM2	Simmons 2
6F ENVOY XB Catheter					
67026090B	6	0.070	90	STR	Straight
67026000B	6	0.070	100	STR	Straight
67025690B	6	0.070	90	MPC	Multipurpose C
67025600B	6	0.070	100	MPC	Multipurpose C
67025890B	6	0.070	90	MPD	Multipurpose D
67025800B	6	0.070	100	MPD	Multipurpose D
67025090B	6	0.070	90	CBL	Modified Cerebral (Burke)
67025000B	6	0.070	100	CBL	Modified Cerebral (Burke)
67025490B	6	0.070	90	H1	Headhunter 1
67025400B	6	0.070	100	H1	Headhunter 1
67025290B	6	0.070	90	SIM2	Simmons 2
67025200B	6	0.070	100	SIM2	Simmons 2



**Available in
6 shapes**


Straight


Multipurpose C


Multipurpose D


Modified








Simmons 2


Headhunter 1

7 FRENCH

Catalog No.	Inner Diameter (in)	Size	Working Length (cm)	Tip Shape
7F ENVOY Catheter				
77826090	0.078	7F	90	Straight
77826000	0.078	7F	100	Straight
77825890	0.078	7F	90	Multipurpose D
77825800	0.078	7F	100	Multipurpose D
77825690	0.078	7F	90	Multipurpose C
77825600	0.078	7F	100	Multipurpose C
77825490	0.078	7F	90	Headhunter 1
77825400	0.078	7F	100	Headhunter 1
77825290	0.078	7F	90	Simmons 2
77825200	0.078	7F	100	Simmons 2
77824890	0.078	7F	90	Modified Cerebral (Burke)
77824800	0.078	7F	100	Modified Cerebral (Burke)

Available in 6 shapes

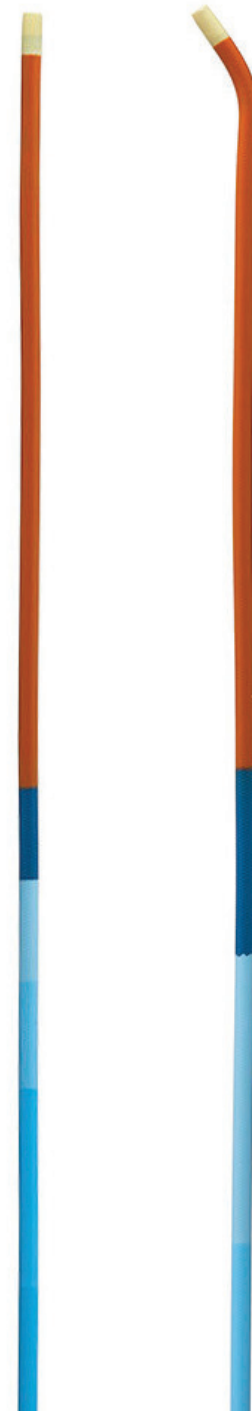
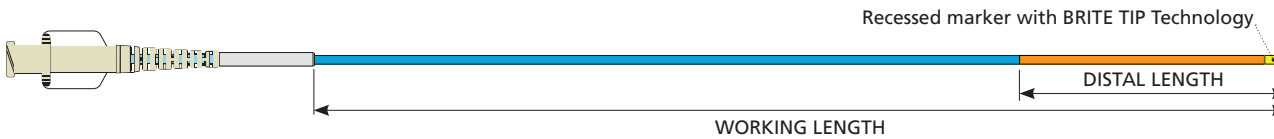
					
Straight	Multipurpose C	Multipurpose D	Modified	Simmons 2	Headhunter 1



6 FRENCH DISTAL ACCESS

Catalog No.	Inner Diameter (in)	Size	Working Length (cm)	Distal Length (cm)	Tip Shape
ENVOY DA Catheter					
67126095D	0.071"	6F	95	8	Straight
67126005D	0.071"	6F	105	8	Straight
67125895D	0.071"	6F	95	8	Multipurpose D
67125805D	0.071"	6F	105	8	Multipurpose D
67125695D	0.071"	6F	95	8	Multipurpose C
67125605D	0.071"	6F	105	8	Multipurpose C
ENVOY DA XB Catheter					
67126095DB	0.071"	6F	95	8	Straight
67126005DB	0.071"	6F	105	8	Straight
67125895DB	0.071"	6F	95	8	Multipurpose D
67125805DB	0.071"	6F	105	8	Multipurpose D
67125695DB	0.071"	6F	95	8	Multipurpose C
67125605DB	0.071"	6F	105	8	Multipurpose C

Available in
3 shapes



FRENCH CONVERSION CHART

French	Inches	mm
1	0.013	0.330
1.1	0.014	0.363
1.2	0.016	0.396
1.3	0.017	0.429
1.4	0.018	0.462
1.5	0.020	0.495
1.6	0.021	0.528
1.7	0.022	0.561
1.8	0.024	0.594
1.9	0.025	0.627
2	0.026	0.660
2.1	0.028	0.693
2.2	0.029	0.726
2.3	0.030	0.759
2.4	0.031	0.792
2.5	0.033	0.825
2.6	0.034	0.858
2.7	0.035	0.891
2.8	0.037	0.924
2.9	0.038	0.957
3	0.039	0.990
3.1	0.041	1.023
3.2	0.042	1.056
3.3	0.043	1.089
3.4	0.045	1.122
3.5	0.046	1.155
3.6	0.047	1.188
3.7	0.048	1.221
3.8	0.050	1.254
3.9	0.051	1.287

French	Inches	mm
4	0.052	1.320
4.1	0.054	1.353
4.2	0.055	1.386
4.3	0.056	1.419
4.4	0.058	1.452
4.5	0.059	1.485
4.6	0.060	1.518
4.7	0.062	1.551
4.8	0.063	1.584
4.9	0.064	1.617
5	0.066	1.650
5.1	0.067	1.683
5.2	0.068	1.716
5.3	0.069	1.749
5.4	0.071	1.782
5.5	0.072	1.815
5.6	0.073	1.848
5.7	0.075	1.881
5.8	0.076	1.914
5.9	0.077	1.947
6	0.079	1.980
6.1	0.080	2.013
6.2	0.081	2.046
6.3	0.083	2.079
6.4	0.084	2.112
6.5	0.085	2.145
6.6	0.086	2.178
6.7	0.088	2.211
6.8	0.089	2.244
6.9	0.090	2.277

French	Inches	mm
7	0.092	2.310
7.1	0.093	2.343
7.2	0.094	2.376
7.3	0.096	2.409
7.4	0.097	2.442
7.5	0.098	2.475
7.6	0.100	2.508
7.7	0.101	2.541
7.8	0.102	2.574
7.9	0.103	2.607
8	0.105	2.640
8.1	0.106	2.673
8.2	0.107	2.706
8.3	0.109	2.739
8.4	0.110	2.772
8.5	0.111	2.805
8.6	0.113	2.838
8.7	0.114	2.871
8.8	0.115	2.904
8.9	0.117	2.937
9	0.118	2.970
10	0.131	3.300
11	0.144	3.630
12	0.157	3.960

1 French	= 0.0131 in	= 0.33 mm
1 mm	= 0.0393 in	= 3F
1 in	= 25.4 mm	= 76.2F

CODMAN NEURO



www.depuysynthes.com

© Codman Neuro, a division of DOI 2015. All rights reserved.

The third party trademarks used herein are the trademarks of their respective owners.

DSUS/COD/1214/0219 04/15

¹Test reports and data on file at Codman Neuro

WARNING: In the USA, this product has labeling limitations. See package insert for complete information.

CAUTION: USA Law restricts these devices to sale by or on the order of a physician.

To order in the U.S. call, Johnson & Johnson Health Care Systems Inc. Customer Support Services at 800-255-2500.

Not all products are currently available in all markets.

Products maybe manufactured by one of the following:

Codman & Shurtleff, Inc.

325 Paramount Drive

Raynham, MA 02767

USA

Tel: +1 (800) 225-0460

Medos International SARL

Chemin-Blanc 38

CH-2400 LeLocle

Switzerland