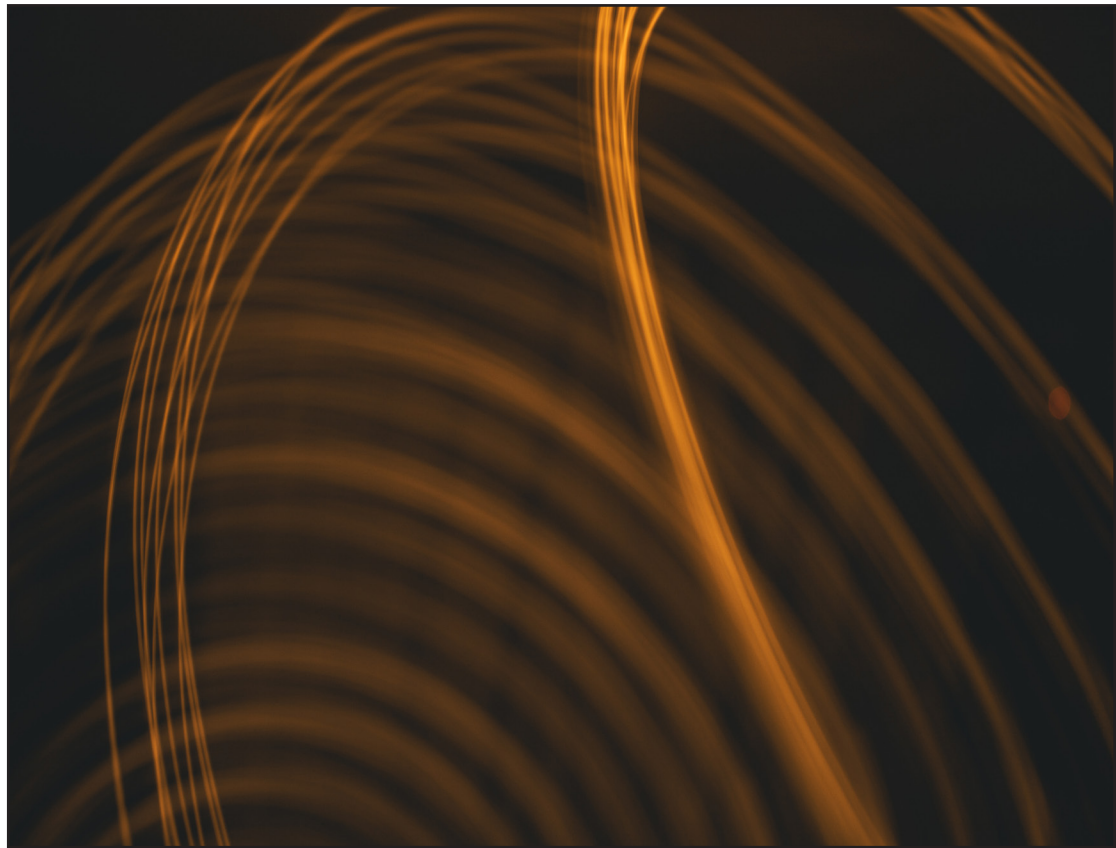




# Technowood®

## SSS GUIDEWIRE



A complete line of guidewires for all your cath lab needs.

Unique shapes for selective positioning  
Improved body stiffness for superior torqueability & enhanced safety  
Hydrophilic coated for improved lubricity

# SSS GUIDEWIRE

Along with traditional guidewire types including straight, angle and J shape, the SSS Guidewire comes in additional shapes like the BK, BK1.5M and AM which are suitable for transradial access angiography.

## BALANCE BETWEEN SAFETY AND MANEUVERABILITY



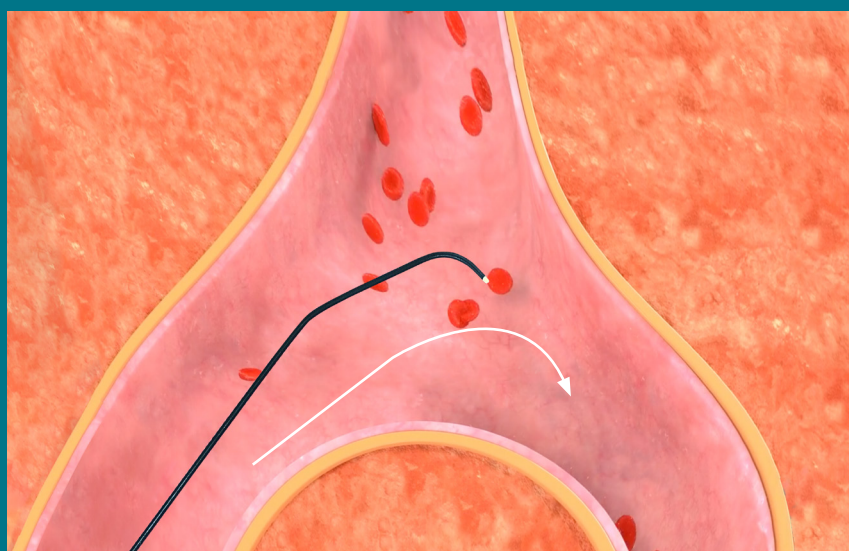
The BK (beak) curve moves in a forward direction just like the J shape but its angled curve not only makes it easier for the tip to be inserted into the catheter hub but also prevents the tip from accidentally entering side branches for selective steering.

Improving further on the BK curve, Technowood's AM and BKM is uniquely engineered with a secondary angled curve designed to facilitate easy maneuverability especially in bifurcation areas like in the subclavian artery and in tortuous vessels.

ANGLE M



BK M

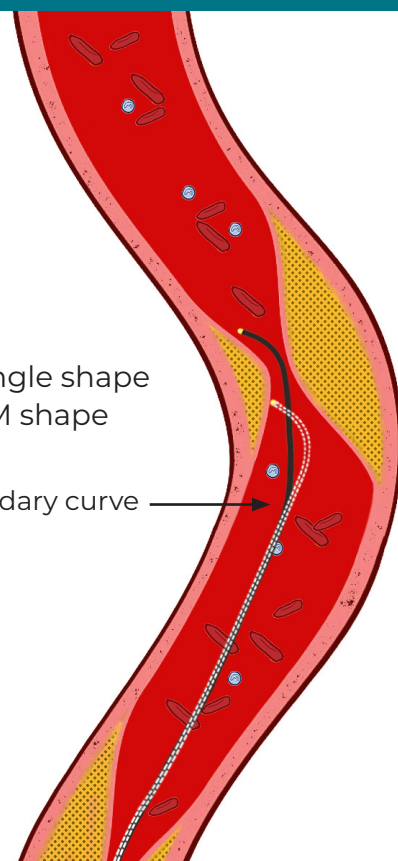


The secondary curve makes it easier to orient the guidewire tip in bifurcation areas.



white - Angle shape  
black - AM shape

secondary curve

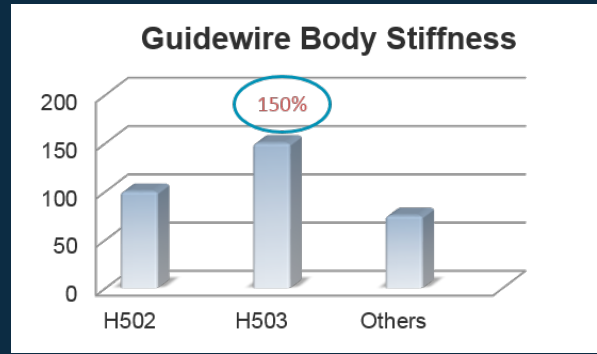
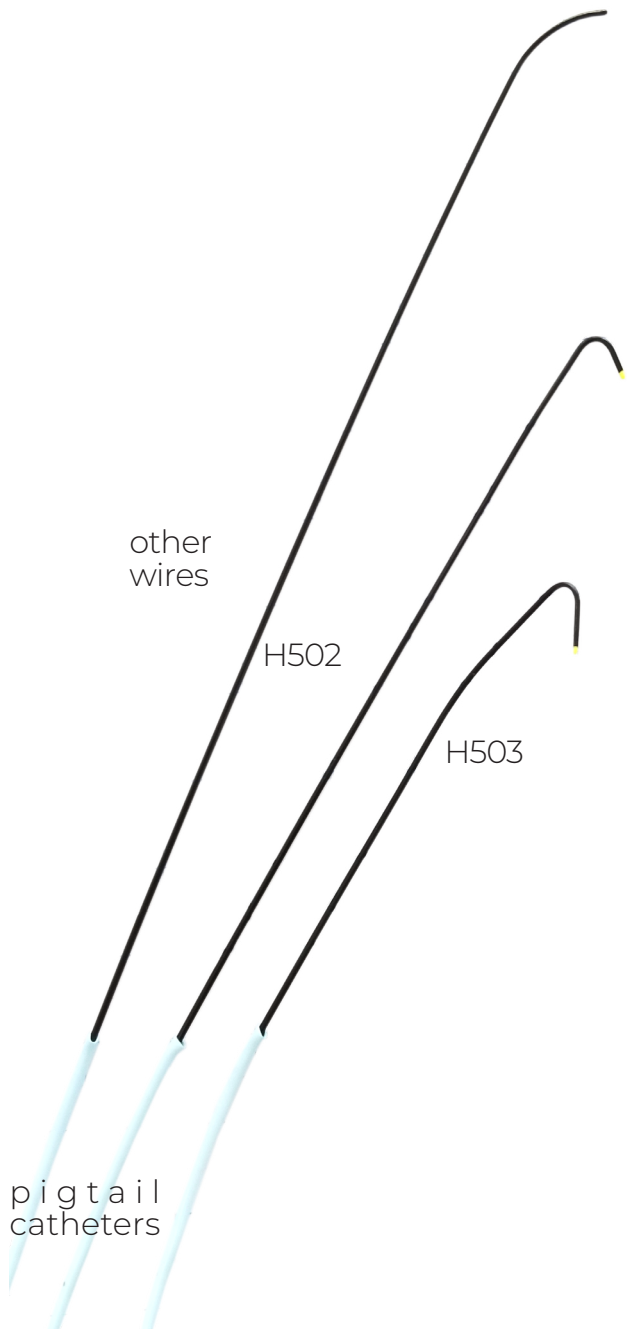


Compared to a regular angle wire, the AM wire can smoothly maneuver through arterial curves and bends.

# SELECTIVE Positioning

# WIRE BODY STIFFNESS

Standard **H502** or Stiff **H503**



With its Nickel+Titanium core, the SSS Guidewire is significantly stiffer than other guidewires. This enables the SSS Guidewire to have superior torqueability and pushability even in cases of extreme vessel tortuosity like those encountered during transradial cases.

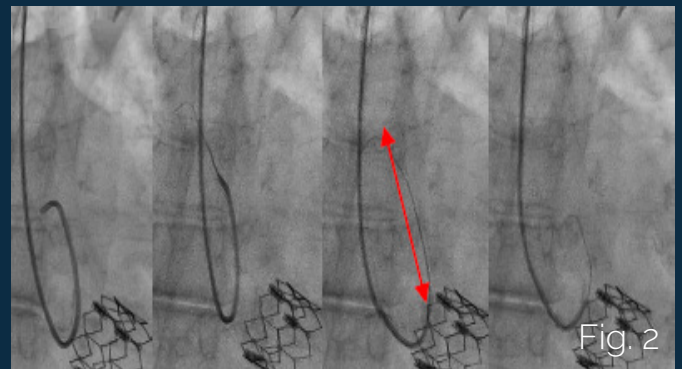
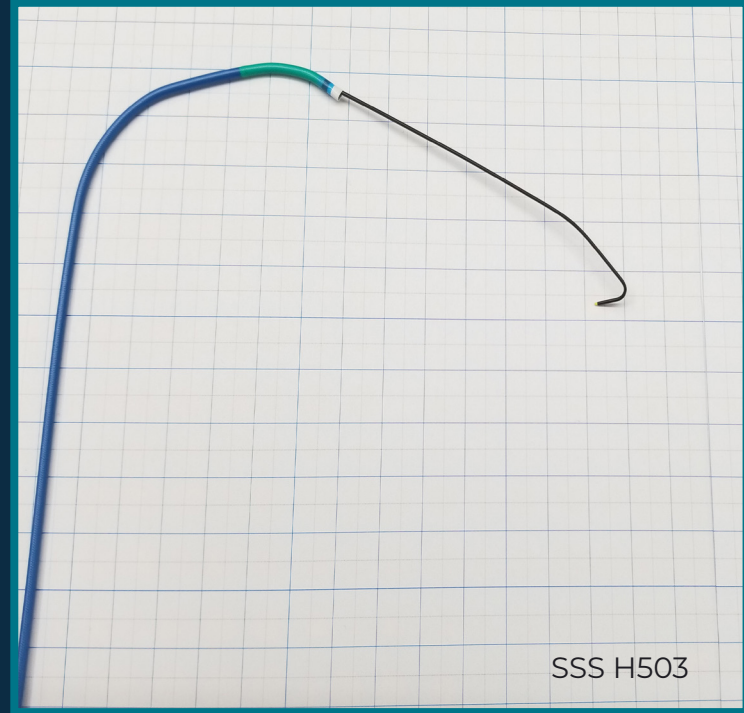
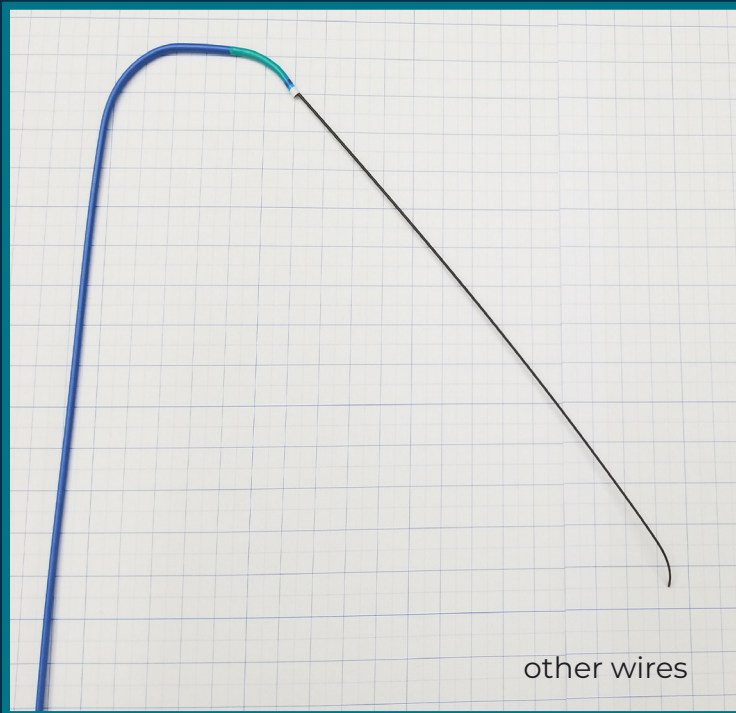
By straightening tortuous vessels before a catheter is introduced, points of contact between the catheter and the arterial walls are decreased, lessening the risk of intimal injury. This also reduces the chance of cholesterol embolism from accidental dislodgement of plaque in proximal arteries.

Compared to other wires, SSS guidewires can easily straighten any pre-shaped catheter, for example, a pigtail catheter, without pushing longer lengths of wire inside.



Even with its stiff body, the distal tip remains soft, flexible and tapered to prevent trauma to the blood vessels.

# ENHANCED Safety



## Superior TORQUEABILITY & Increased MANEUVERABILITY

With conventional guidewires, the guiding catheter cannot be fully straightened and repositioned without inserting long lengths of wire, with the wire tip potentially reaching even the descending aorta (Fig.1). But with the H503 extra stiff guidewire series, the catheter can be fully extended and supported with only a few centimeters of wire extending from the catheter tip (Fig.2). This leads to decreased procedure time and improved safety for the patient.

The SSS Guidewire has a full polyurethane jacket with tungsten for improved trackability in narrow, tortuous arteries.





## HYDROPHILIC COATING

Compared to Teflon coating, hydrophilic coating has a lower frictional resistance and lower thrombogenic factor. Technowood's special hydrophilic coating formula ensures improved but not excessive lubricity for easier passage through small, narrow, tortuous vessels and reduced risk of injury and clot formation inside the vessels.



Prevents the guidewire tip from accidentally entering the side port of a Y connector to ensure a quicker and more efficient procedure.



# LONG STRAIGHTENER

“L” series

# CATALOG

SSS Guidewire		0.035" / Hydrophilic Coated		Units/Box: 5
Tip Shape	FLEX Type	STIFF Type	Long Straightener	Length (cm)
	H502	H503	H503L	
Straight	H502-3515S	H503-3515S	H503L-3515S	150
	H502-3518S	H503-3518S	H503L-3518S	180
	H502-3520S	H503-3520S	H503L-3520S	200
	H502-3522S	H503-3522S	H503L-3522S	220
	H502-3526S	H503-3526S	H503L-3526S	260
Angle	-	H503-3508A	-	80
	H502-3515A	H503-3515A	H503L-3515A	150
	H502-3518A	H503-3518A	H503L-3518A	180
	H502-3520A	H503-3520A	H503L-3520A	200
	H502-3522A	H503-3522A	H503L-3522A	220
	H502-3526A	H503-3526A	H503L-3526A	260
J shape 2mm	H502-3515P2	H503-3515P2	H503L-3515P2	150
	H502-3518P2	H503-3518P2	H503L-3518P2	180
	H502-3520P2	H503-3520P2	H503L-3520P2	200
	H502-3522P2	H503-3522P2	H503L-3522P2	220
	H502-3526P2	H503-3526P2	H503L-3526P2	260
J shape 3mm	H502-3515P3	H503-3515P3	H503L-3515P3	150
	H502-3518P3	H503-3518P3	H503L-3518P3	180
	H502-3520P3	H503-3520P3	H503L-3520P3	200
	H502-3522P3	H503-3522P3	H503L-3522P3	220
	H502-3526P3	H503-3526P3	H503L-3526P3	260
BK 1.5mm	-	H503-3508BK1.5	-	80
	H502-3515BK1.5	H503-3515BK1.5	H503L-3515BK1.5	150
	H502-3518BK1.5	H503-3518BK1.5	H503L-3518BK1.5	180
	H502-3520BK1.5	H503-3520BK1.5	H503L-3520BK1.5	200
	H502-3522BK1.5	H503-3522BK1.5	H503L-3522BK1.5	220
	H502-3526BK1.5	H503-3526BK1.5	H503L-3526BK1.5	260
Angle M (AM)	-	H503-3508AM	-	80
	H502-3515AM	H503-3515AM	H503L-3515AM	150
	H502-3518AM	H503-3518AM	H503L-3518AM	180
	H502-3520AM	H503-3520AM	H503L-3520AM	200
	H502-3522AM	H503-3522AM	H503L-3522AM	220
	H502-3526AM	H503-3526AM	H503L-3526AM	260
BK M 1.5mm	-	H503-3508BK1.5M	-	80
	H502-3515BK1.5M	H503-3515BK1.5M	H503L-3515BK1.5M	150
	H502-3518BK1.5M	H503-3518BK1.5M	H503L-3518BK1.5M	180
	H502-3520BK1.5M	H503-3520BK1.5M	H503L-3520BK1.5M	200
	H502-3522BK1.5M	H503-3522BK1.5M	H503L-3522BK1.5M	220
	H502-3526BK1.5M	H503-3526BK1.5M	H503L-3526BK1.5M	260

# Technowood®

[www.technowood.co.jp](http://www.technowood.co.jp)

## *JAPAN*

### **Technowood Corporation**

Tel: +81 (3) 3856-4111

Fax: +81 (3) 3856-4113

## *USA*

### **Technowood America Corporation**

Tel: +1 (714) 434-8713

Fax: +1 (714) 434-8715

## *INTERNATIONAL*

### **Technowood International Pte. Ltd.**

Tel: +81 (3) 3898-5252

Fax: +81 (3) 3898-5252



Please refer to the Instructions for Use for details.  
Terms and conditions may change without prior notice.  
Please contact the regional Technowood representative for more information.