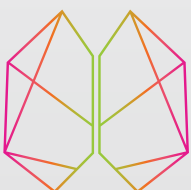




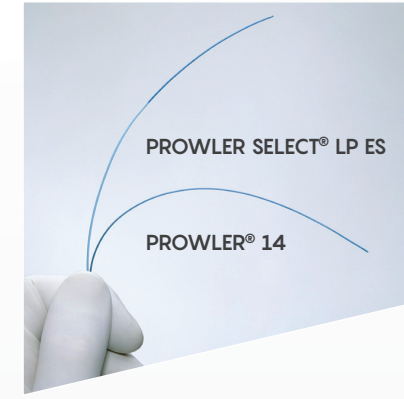
BALANCE BETWEEN  
**STABILITY** AND  
**NAVIGABILITY**



**CERENOVUS**  
PART OF THE *Johnson & Johnson* FAMILY OF COMPANIES

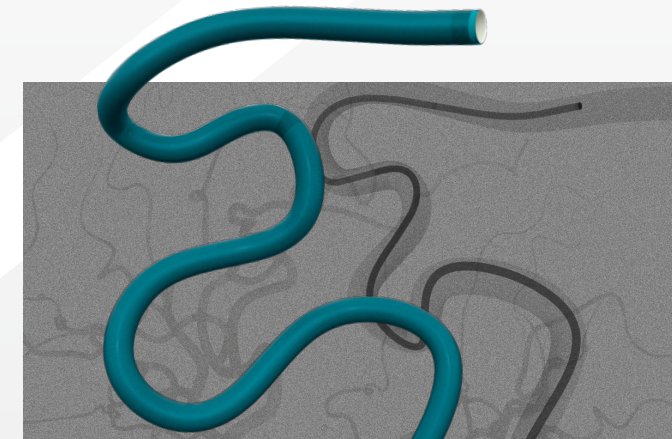
**PROWLER<sup>®</sup>**  
microcatheter

**PROWLER SELECT<sup>®</sup>**  
microcatheter



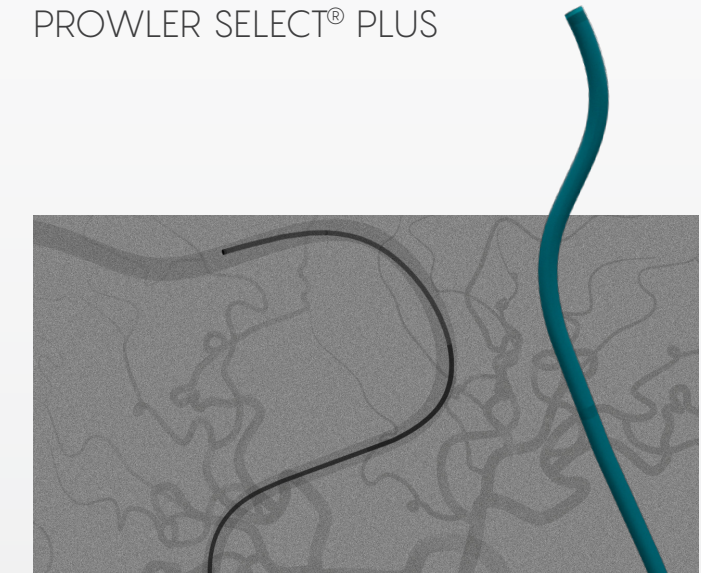
**PROWLER®**  
microcatheter

- PROWLER® 10
- PROWLER® 14
- PROWLER® PLUS

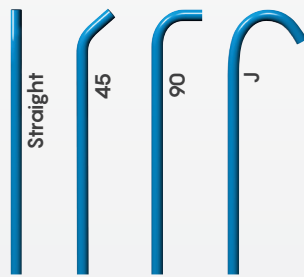
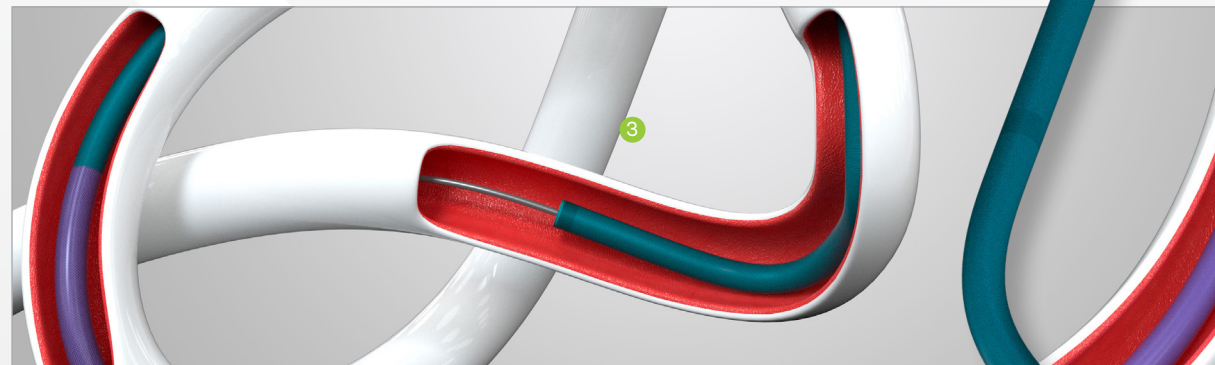


**PROWLER SELECT®**  
microcatheter

- PROWLER SELECT® LP ES
- PROWLER SELECT® PLUS



PROWLER® 14 Microcatheter



TIP SHAPES

**1 Proprietary Braid/Coil Construction**

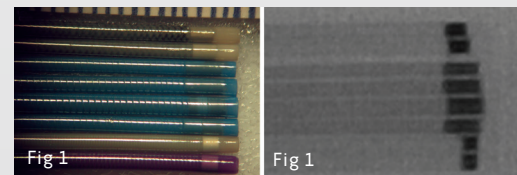
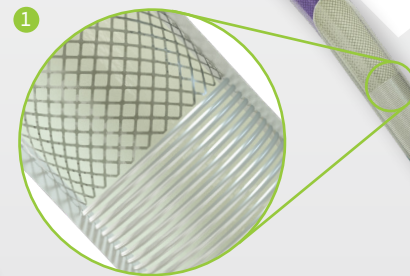
- Provides a balance of stability (braid section) and navigability (coil section)

**2 TRUELUMEN® Technology**

- Provides a consistent inner diameter throughout the length of the microcatheter
- In-line marker bands provide a consistent profile and enhanced visibility under fluoroscopy

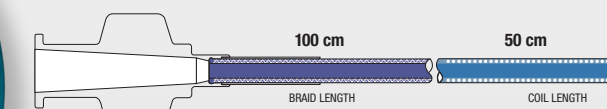
**3 Accurate Tip Position:**

- Shorter distal tip extending past the distal marker (as little as 0.5 mm<sup>1</sup>) provides more accurate representation of tip position under fluoroscopy.

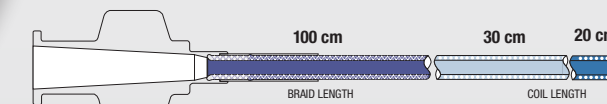


- Competition
- PROWLER®
- Competition

**LONGER DISTAL COIL LENGTH + SHORTER PROXIMAL BRAID LENGTH = NAVIGABILITY**



PROWLER® 14 and PROWLER® 10



PROWLER® PLUS

**SHORTER DISTAL COIL LENGTH + LONGER PROXIMAL BRAID LENGTH = STABILITY**



PROWLER SELECT® LP ES



PROWLER SELECT® PLUS 160

PROXIMAL NYLON SECTION    MIDDLE HYDROPHILIC SECTION    DISTAL HYDROPHILIC SECTION

<sup>1</sup> Structural limitations of currently available microcatheters and coils for endovascular coiling of very small aneurysms, Lim et al, Neuroradiology, 2008 May;50(5):423-7. Fig 1, © 2008 Springer, Used with kind permission from Springer Science and Business Media.

Variability by model, not all models are represented above

# PROWLER®

microcatheter

## FAMILY OF MICROCATHETERS

BALANCE BETWEEN **STABILITY**  
AND **NAVIGABILITY**

### ORDERING INFORMATION: NAVIGABILITY

CATALOG NO.	USABLE LENGTH (CM)	TOTAL LENGTH (CM)	DISTAL FLEXIBLE LENGTH (CM)	OD (PROX./DISTAL)	INNER DIAMETER (IN)	SHAPE	MARKER BANDS
<b>PROWLER® 10 Microcatheter</b>							
606051X	150	155	50	2.3F/1.7F	0.015"	Straight	2
606051FX	150	155	50	2.3F/1.7F	0.015"	45°	2
606051MX	150	155	50	2.3F/1.7F	0.015"	90°	2
606051JX	150	155	50	2.3F/1.7F	0.015"	J	2
<b>PROWLER® 14 Microcatheter</b>							
606151X	150	155	50	2.3F/1.9F	0.0165"	Straight	2
606151FX	150	155	50	2.3F/1.9F	0.0165"	45°	2
606151MX	150	155	50	2.3F/1.9F	0.0165"	90°	2
606151JX	150	155	50	2.3F/1.9F	0.0165"	J	2
606171	170	175	50	2.3F/1.9F	0.0165"	Straight	1
<b>PROWLER® PLUS Microcatheter</b>							
6062510	150	155	20	2.8F/2.3F	0.021"	Straight	1
6062511	150	155	45	2.8F/2.3F	0.021"	Straight	1
6062510X	150	155	20	2.8F/2.3F	0.021"	Straight	2
6062510FX	150	155	20	2.8F/2.3F	0.021"	45°	2
6062510MX	150	155	20	2.8F/2.3F	0.021"	90°	2
6062510JX	150	155	20	2.8F/2.3F	0.021"	J	2
6062511X	150	155	45	2.8F/2.3F	0.021"	Straight	2
6062511FX	150	155	45	2.8F/2.3F	0.021"	45°	2

### ORDERING INFORMATION: STABILITY

CATALOG NO.	USABLE LENGTH (CM)	TOTAL LENGTH (CM)	DISTAL FLEXIBLE LENGTH (CM)	OD (PROX./DISTAL)	INNER DIAMETER (IN)	SHAPE	MARKER BANDS
<b>PROWLER SELECT LP-ES</b>							
606S155X	150	155	5	2.3F/1.9F	0.0165"	Straight	2
606S155FX	150	155	5	2.3F/1.9F	0.0165"	45°	2
606S155MX	150	155	5	2.3F/1.9F	0.0165"	90°	2
606S155JX	150	155	5	2.3F/1.9F	0.0165"	J	2
<b>PROWLER SELECT Plus</b>							
606S252	150	155	15	2.8F/2.3F	0.021"	Straight	1
606S252X	150	155	15	2.8F/2.3F	0.021"	Straight	2
606S252FX	150	155	15	2.8F/2.3F	0.021"	45°	2
606S255X	150	155	5	2.8F/2.3F	0.021"	Straight	2
606S255FX	150	155	5	2.8F/2.3F	0.021"	45°	2
606S255MX	150	155	5	2.8F/2.3F	0.021"	90°	2
606S255JX	150	155	5	2.8F/2.3F	0.021"	J	2
MC21160C2	160	165	5	2.8F/2.3F	0.021"	Straight	2
606S272X	170	175	15	2.8F/2.3F	0.021"	Straight	2

#### Manufacturer:

Medos International SARL  
Chemin-Blanc 38  
Le Locle  
CH-2400  
Switzerland

#### Johnson & Johnson Medical Ltd.

Pinewood Campus, Nine Mile Ride  
Wokingham, RG40 3EW  
United Kingdom

#### Registered Office:

Baird House,  
4 Lower Gilmore Bank,  
Edinburgh EH3 9QP

Registered in Scotland, No.SC 132162

**Limited warranty and disclaimer:** CERENOVUS products are sold with a limited warranty to the original purchaser against defects in workmanship and materials. Any other express or implied warranties, including warranties of merchantability or fitness, are hereby disclaimed. Please also refer to the package insert(s) or other labeling associated with the devices identified in this document for additional information.

**Note:** For recognized manufacturer, refer to the product label.

Not all products are currently available in all markets.

The third party trademarks used herein are the trademarks of their respective owners.

This publication is not intended for distribution in the USA.

©CERENOVUS 2020. All rights reserved. XXXXXXXXXX



**CERENOVUS**  
PART OF THE **Johnson & Johnson** FAMILY OF COMPANIES