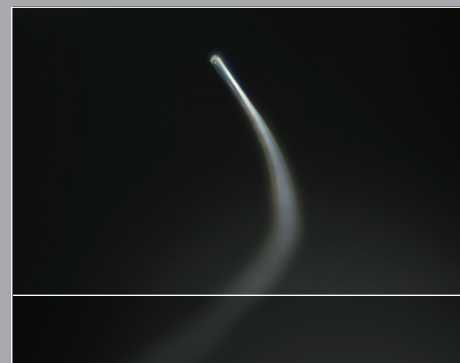


AGILITY® Steerable Guidewires Greater Control for Enhanced Access

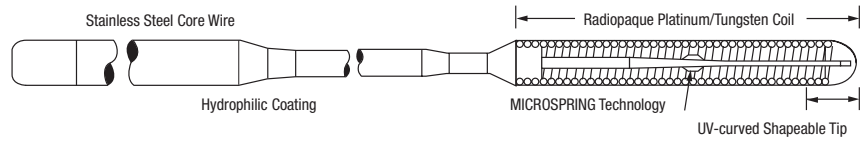


The soft tips of **AGILITY® Steerable Guidewires** enable easy shapeability and safe vessel access



AGILITY® Steerable Guidewires

Greater control for enhanced access



USA
Codman & Shurtleff, Inc.
 325 Paramount Drive
 Raynham, MA 02767
 www.codman.com



To place an order, call 1-800-255-2500.

For technical/product questions, call 1-800-225-0460.

For product availability, please contact your Codman Neurovascular representative.

SPECIFICATIONS:

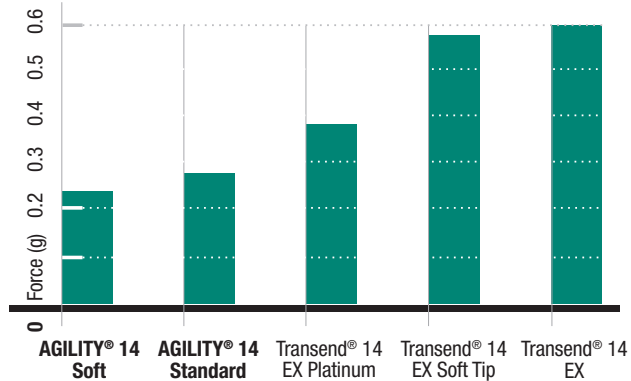
- Outer Diameter: 0.010 in., 0.014 in. or 0.016 in.
- Taper Length: 33 - 45 cm
- Tip Coil Length: 8 - 20 cm
- Exchange Length (350 cm): 0.014 in.
- Tip Style: Straight/Shapeable (2 cm)

MICROSPRING Technology

Innovative annular ring is designed to facilitate consistent transmission of torque to the distal tip.

Tip Softness

Data on file.
 Codman Neurovascular, 2009



ORDERING INFORMATION:

Catalog No.	Description	Outer Diameter (inches)	Usable Length (cm)	Taper Length (cm)
AGILITY® 10				
614-178	Standard	0.010	195	36
614-179	Soft	0.010	195	38
AGILITY® 14				
614-481	Standard	0.014	205	42
614-482	Soft	0.014	205	45
614-491	Standard XL	0.014	350	42
AGILITY® 16				
614-541	Standard	0.016	175	33
614-542	Soft	0.016	175	44
614-581	Standard	0.016	205	33

AGILITY® Essential Prescribing Information (EPI)

Caution: Federal (USA) law restricts this product to sale by or on the order of a physician.

INDICATIONS: The Codman Neurovascular AGILITY® Steerable Guidewires are intended for selective placement of microcatheters and other devices in the neuro and peripheral vasculature. **CONTRAINDICATIONS:** AGILITY® Steerable Guidewires are contraindicated for use in chronic total occlusions in the peripheral vasculature. **WARNINGS:** Do not reuse. Discard after one procedure. Structural integrity and/or function may be impaired through reuse or cleaning. All parts are extremely difficult to clean after exposure to biological materials and may cause adverse patient reactions if reused. Guidewires are delicate instruments and should be handled carefully. Special care should be taken when shaping the guidewire tip in order to prevent damage. Prior to use and when possible during the procedure, inspect the guidewire carefully for coil separation, bends or kinks. Do not use a guidewire that shows signs of damage. Damage will prevent the guidewire from performing with accurate torque response and control. Guidewire manipulation/torquing should always be performed under fluoroscopic guidance. Never advance, withdraw or auger the guidewire against resistance without first determining the cause of resistance under fluoroscopy. Torquing the guidewire against resistance may cause damage and/or fracture which may result in separation of the distal tip. Should the guidewire tip become entrapped within the vasculature (i.e., small side branch), DO NOT TORQUE THE GUIDEWIRE. Advance the microcatheter distally, gently pull the guidewire back into the microcatheter, and remove the microcatheter/guidewire system as a unit. Should torque control/tip response be compromised during use, confirm tip integrity using fluoroscopy. **LOSS OF TORQUE CONTROL MAY BE DUE TO CORE WIRE FRACTURE.** Under fluoroscopic guidance, advance the microcatheter to the distal end of the guidewire and remove the microcatheter/guidewire system as a unit. The steerable guidewire should not be used during magnetic resonance procedures. **PRECAUTIONS:** Store in a cool, dark, dry place. Do not use open or damaged packages. Use prior to the "Use By" date. Do not autoclave. Exposure to temperatures above 54°C (130°F) may damage the guidewire. Do not expose to organic solvents. Movement of torque device or metal insertion tool on a guidewire's coating may compromise the integrity of the coating. **COMPLICATIONS:** Procedures requiring percutaneous guidewire introduction should not be attempted by physicians unfamiliar with the possible complications. Complications may occur at anytime during or after the procedure. Possible complications include, but are not limited to: infection; hemorrhage; emboli; vasospasm; perforation of the vessel wall; ischemia and related neurological dysfunction; stroke and death; and/or dissection of the vessel wall.

Other Important Information: Prior to use, please read full "Instructions for Use" supplied with these devices for more detailed product and use information.

Codman Neurovascular is a business unit of Codman & Shurtleff, Inc.

The third party trademarks used herein are trademarks of their respective owners. AGILITY® is a registered trademark of Codman & Shurtleff, Inc.

©2009 Codman & Shurtleff, Inc. All Rights Reserved.

VC/SE CNV-11-000