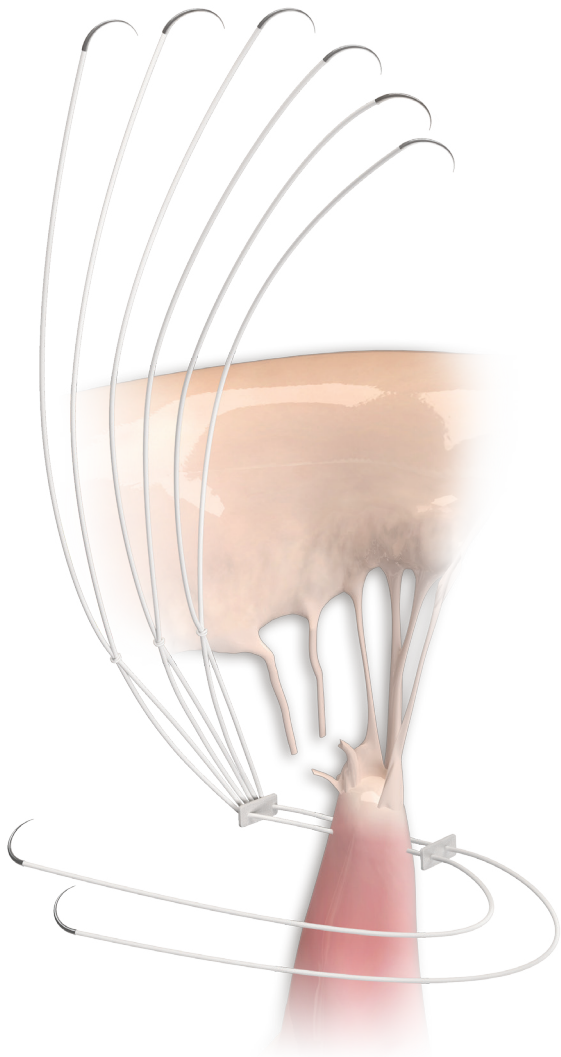
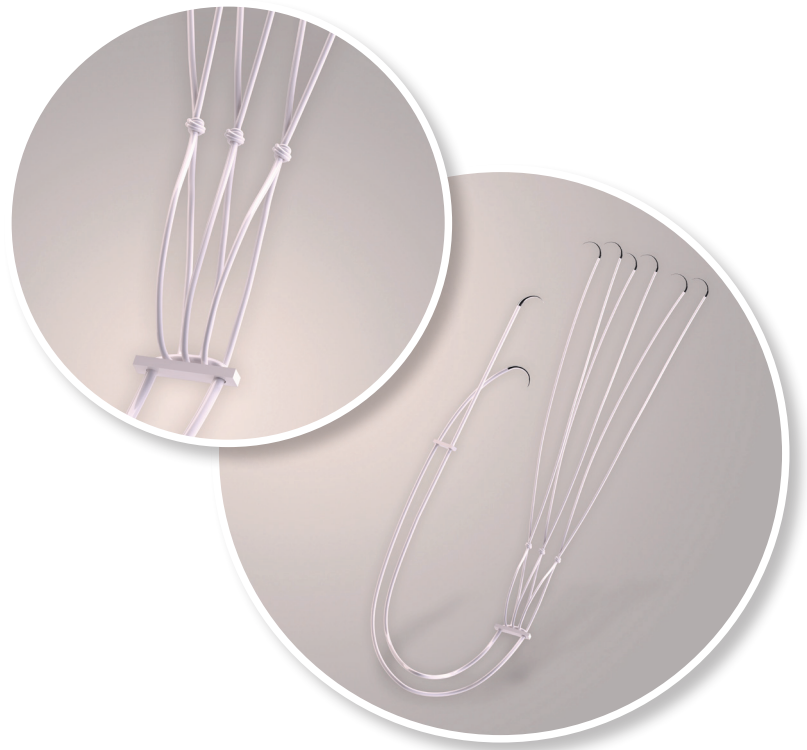


Challenge: "Intraoperative creation of chordal loops is tedious and adds to operative time..."¹

Solution: Chord-X - designed to save time, allow reproducible results, & simplify procedures*



Chord-X[®] | Pre-Measured Loops



3 Pre-Measured Loops

*Compared to artificial chords made by surgeon.



Product Overview

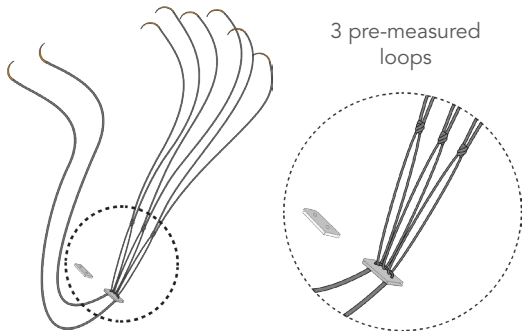
Chord-X Pre-Measured Loops and the **Chord-X Adjustable Suture System** are artificial chordae prostheses configured from non-absorbable, monofilament ePTFE suture with pledgets ready for mitral chordal implant.

The **Chord-X Chordal Sizer** measures and indicates the required Chord-X prosthesis size needed. The Chord-X Chordal Sizer corresponds with a Chord-X Pre-Measured Loops and Adjustable Suture System using a color-coded sizing system. The Sizer also provides two hooks for loop creation and knot-tying.

Compared to artificial chords made by the surgeon during the procedure, Chord-X Mitral Chordal Replacement Products are designed to save time, allow reproducible results, and simplify procedures.

Chord-X[®] | Pre-Measured Loops

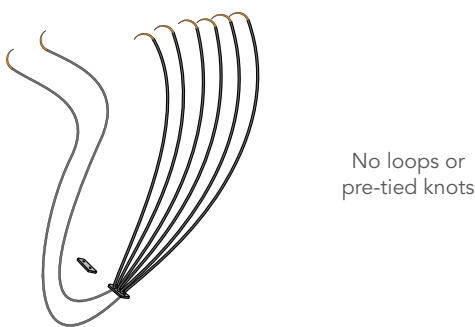
Designed for the surgeon who prefers pre-measured chordal loops



- 3 x independent Chord-X Pre-Measured Loop lengths available in 12, 16, 20, and 24mm
- 2-0 USP ePTFE suture (diameter similar to GORE-TEX[®] CV-4)
- 1 x double armed papillary suture with a 3x7x1.85mm PTFE pledget
- 1 x independent 3x7x1.85mm PTFE pledget
- 18mm tapered point needles

Chord-X[®] | Adjustable Suture System

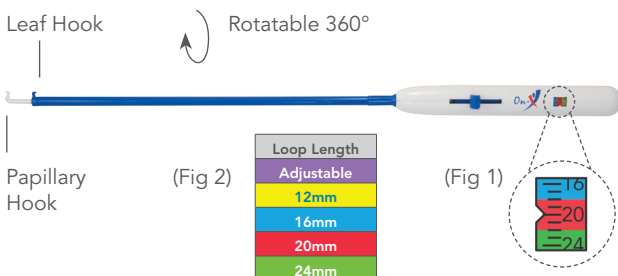
Designed for the surgeon to customize the length of chords



- 3 x independent double armed sutures (no loops or pre-tied knots)
- 2-0 USP ePTFE suture (diameter similar to GORE-TEX CV-4)
- 1 x double armed papillary suture with a 3x7x1.85mm PTFE pledget
- 1 x independent 3x7x1.85mm PTFE pledget
- 18mm tapered point needles

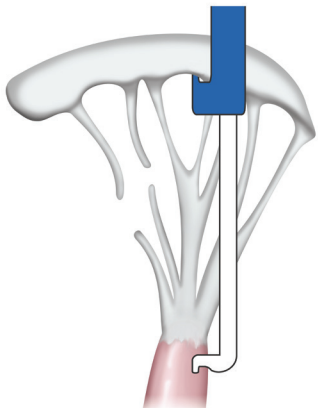
Chord-X[®] | Chordal Sizer

Designed to measure and indicate the required Chord-X prosthesis size needed

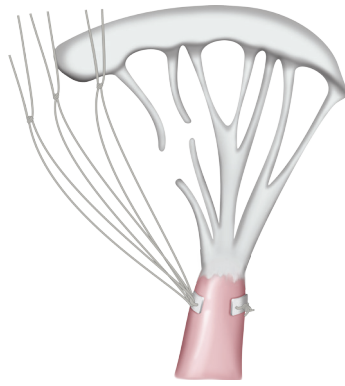


- Color coded scale (Fig. 1) corresponds to Chord-X Pre-Measured Loops and Adjustable Suture System (Fig. 2)
- Provides fast and accurate sizing
- Rotatable sizing instrument for enhanced visualization

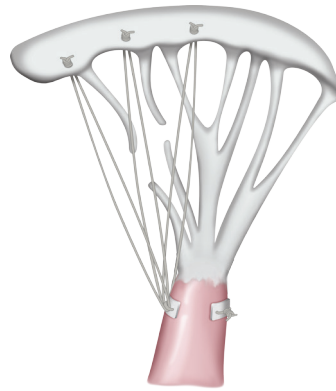
Procedural Overview



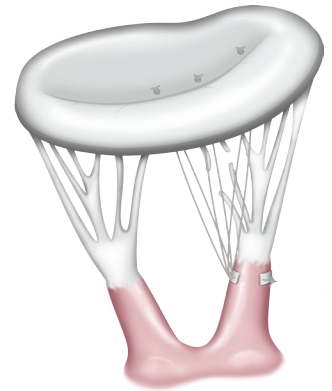
Measure to Determine Size of Chord-X Artificial Chords



Papillary Muscle Attachment



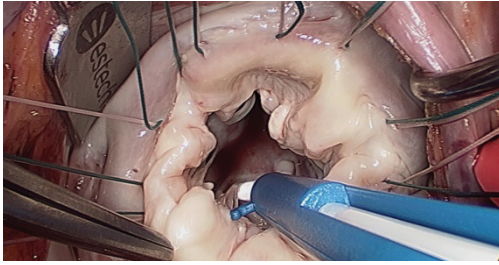
Leaflet Attachment



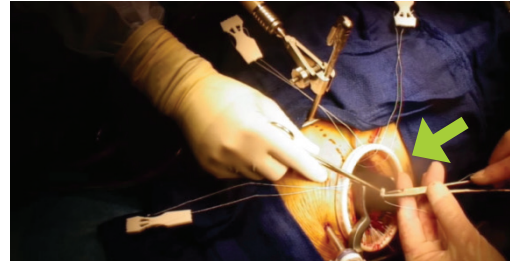
Implant Complete

See Instructions for Use for full details.²

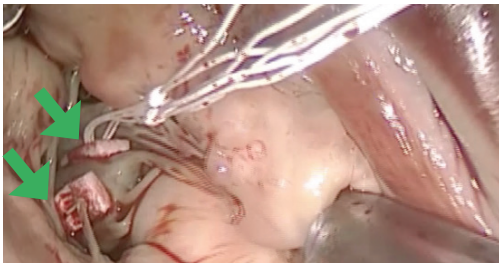
In Use Images



Chord-X Chordal Sizer used to determine chord length from papillary to leaflet



The second pledget for Chord-X Pre-Measured Loops is being advanced over suture for papillary attachment



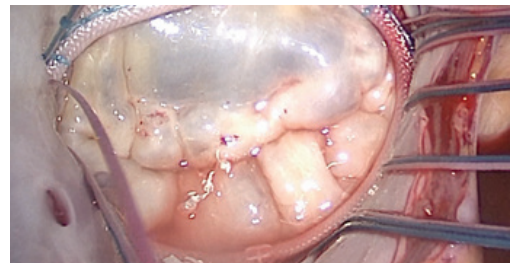
Chord-X Pre-Measured Loops have been attached to papillary (based on Chord-X Chordal Sizer measurement)



Chord-X Pre-Measured Loops may be placed in Gabbay-Frater Suture Guide™ (not required) for suture management



Chord-X Pre-Measured Loops attachments to leaflet with hand-tied knots are complete



Coaptation confirmed with saline test

See Instructions for Use for full details.²

Correcting Mitral Prolapse and Reducing Operative Time

“Intraoperative creation of chordal loops is tedious and adds to operative time. [...] Chord-X Pre-Measured Loops [...] can be used to correct prolapse at any site of the mitral valve. The Chord-X Loops facilitate mitral valve repair while reducing operative time.”¹

Ordering Information

Chord-X Pre-Measured Loops and Adjustable Suture System		
ePTFE Suture Diameter: USP 2-0 (Diameter similar to GORE-TEX CV-4)	18mm Taper Point Needle Options, Catalog Numbers	
Loop Length	3/8 Circle	1/2 Circle
Adjustable	CXL-20-1838-0	CXL-20-1812-0
12mm	CXL-20-1838-12	CXL-20-1812-12
16mm	CXL-20-1838-16	CXL-20-1812-16
20mm	CXL-20-1838-20	CXL-20-1812-20
24mm	CXL-20-1838-24	CXL-20-1812-24

- 1 box = 5 sterile Chord-X packaged units.
- Each unit contains a Chord-X prosthesis featuring one suture pair for the papillary muscle and three independent pre-measured chordal suture loops or suture strands for leaflet attachment.
- Each prosthesis is positioned on disposable foam base-plates for suture management.
- Each unit has double-armed taper point needles, two PTFE pledgets: one attached and one independent.

Chord-X Chordal Sizer		
Packaged Quantity	Use	Catalog Number
1 box = 5 individually packaged sterile Chord-X Chordal Sizers	Single use, disposable device	CXCS

Learn more at: www.CryoLife.com

1. Gillinov, et al., Ann Thor Surg 2016;102(3):e269–e271. 2. Chord-X Pre-Measured Loops and Chord-X Adjustable Suture System Instructions for Use.

On-X Life Technologies, Inc. is a wholly owned subsidiary of CryoLife, Inc. The Chord-X Mitral Chordal Replacement Products are manufactured by On-X Life Technologies, Inc. CryoLife, the snowflake design, Life Restoring Technologies, and Chord-X are registered trademarks owned by CryoLife, Inc. or its subsidiaries. All other registered trademarks are owned by their respective owners. © 2017 CryoLife, Inc. All rights reserved. Surgical technique is at the discretion of the surgeon. Variations in technique and practices will inevitably and appropriately occur when clinicians take into account the needs of the individual patients, available resources, and limitations unique to an institution or type of practice.

On-X Life Technologies, Inc.
1300 East Anderson Lane, Bldg. B
Austin, Texas 78752 USA
Phone: (512) 339-8000
Fax: (512) 339-3636
Email: onx@onxlti.com

CryoLife, Inc.
1655 Roberts Boulevard, NW,
Kennesaw, Georgia 30144 USA
Phone: 888-427-9654
Fax: 770-590-3753
Email: CUSTSVC@cryolife.com

CryoLife Europa
Bramley House, The Guildway
Old Portsmouth Road
Guildford, Surrey GU3 1LR
United Kingdom
Tel: +44 (0) 1483 441030
Fax: +44 (0) 1483 452860
Email: europaorders@cryolife.com

CryoLife Asia Pacific, Pte, Ltd.
1 Marina Boulevard, #28-00,
One Marina Boulevard, Singapore (018989)
Phone: +65 (0) 9784 9820
Email: CUSTSVC@cryolife.com

MLENG1077.001 (06/2017)

